

PLATINUM

August 2025
Strata Titling

**Mastermind
Event**

Brisbane

**Dr Tamara Read &
Christine Hamilton**

QLD State Coaches



I LOVE
REAL ESTATE

Event Outline -

- 6:00 – 6:30 Networking
- 6:30 - Start
- 6:30 – 6:45 Housekeeping
- 6:45 – 8:00 Personal Development & Accountability
- 8:00 – 8:30 Networking Break
- 8:30 – 10:30 Strata Titling

Workshop Format

- Use microphone
- Involve everyone in the conversation
- Be supportive
- Feel free to order food and drinks downstairs



WELCOME NEW PLATINUM'S



● ??????????????

* Platinum Elites

Housekeeping



2025 DATES

- **1) PA Monthly Dates (Tuesday's)**

**New Venue - Pullman King
George Square 6pm start**

- ❖ 2nd September
- ❖ 7th October
- ❖ 4th November
- ❖ 9th December

- **2) PA Nationals**

- ❖ 5-7th Dec Melbourne

- **3) Ultimate Bootcamps**

- ❖ 12-14th Sept Brisbane

- **4) Ultimate Other**

- ❖ 14-16th Nov Super Conf -
Melbourne



PLATINUM
ACCELERATOR

INTERNATIONAL
CONFERENCE

PH
MOVE
TUESD

Congratulations!



I LOVE
REAL ESTATE

Knowledge
Source





Money Mind Mastery



Designed to tackle the top 4 Mindset issues that affect ILRE students.

Creating momentum toward success!

All sessions starting 7pm
Melb/Syd Time

- 25 August
- 29 September
- 27 October
- 24 November

Platinum Student Meetups

- ❖ PA Website / Platinum Schedule
- ❖ Must have your Facebook account / profile open to access the links

PLATINUM ACCELERATOR

[Home](#) [Education](#) [Meeting Recordings](#) [Coaches & Contact](#) [Platinum Schedule](#) [Community](#)

PA Student Meetup Groups

These Student Meetup groups are for ALL Platinum students only, both past and present. They are organised by Platinum students to facilitate networking between Platinums and staying connected with the awesome Platinum family. Typically they occur between the PA Monthly Meetings.

NOTE: You MUST have your Facebook Account/Profile open to access these links.

Brisbane Student Meetup



Student Organizer – Magen Humphreys

Click on the link below to access the Platinum Accelerator Facebook Events for each Brisbane Student Meetup. All of the upcoming dates, location, times and RSVP information is in these events.

[Brisbane Student Meetup](#)

Sydney Student Meetup



Student Organizer – Cindy Luok

Click on the link below to access the Platinum Accelerator Facebook Events for each Sydney Student Meetup. All of the upcoming dates, location, times and RSVP information is in these events.

[Sydney Student Meetup](#)

Melbourne Student Meetup



Student Organizer – Aygun Ozkan

Click on the link below to access the Platinum Accelerator Facebook Events for each Melbourne Student Meetup. All of the upcoming dates, location, times and RSVP information is in these events.

[Melbourne Student Meetup](#)

Perth Student Meetup

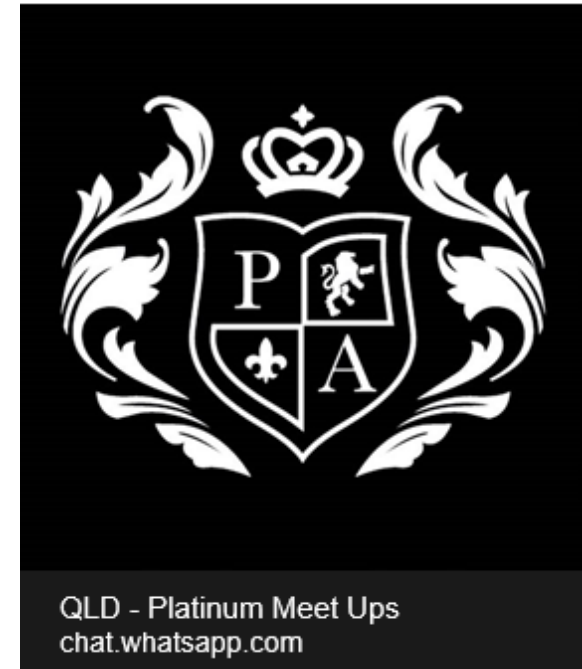
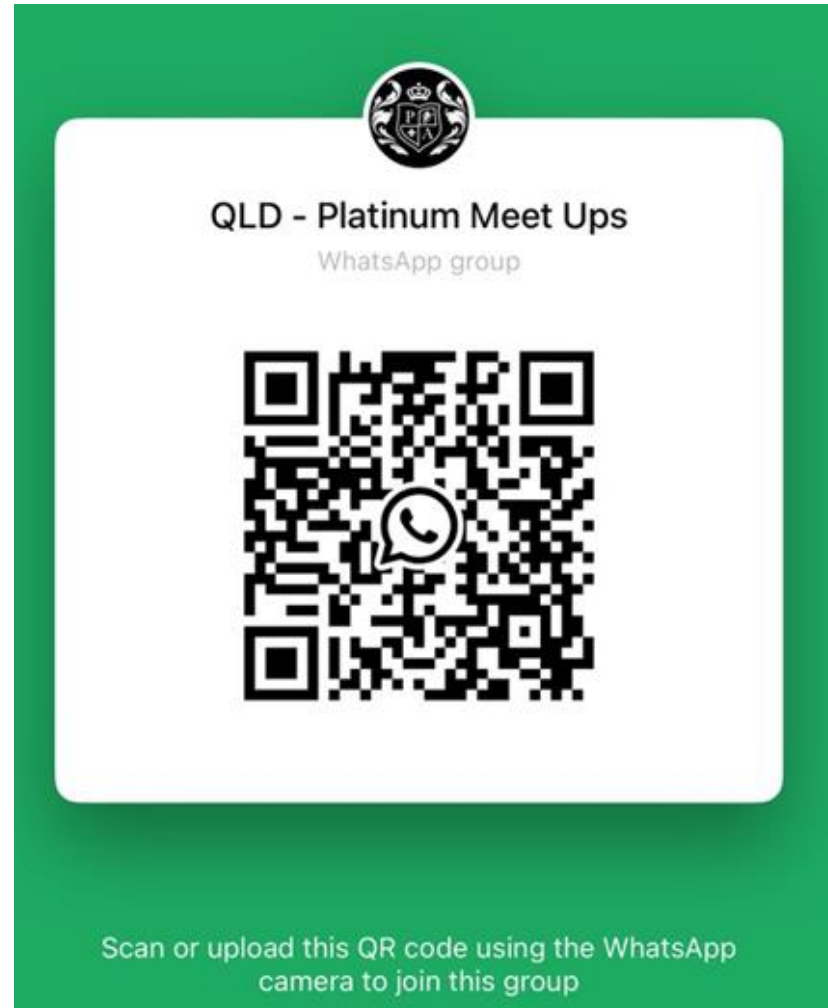


Student Organizer – Basia Garbowska & Heath Worlton

Click on the link below to access the Platinum Accelerator Facebook Events for each Melbourne Student Meetup. All of the upcoming dates, location, times and RSVP information is in these events.

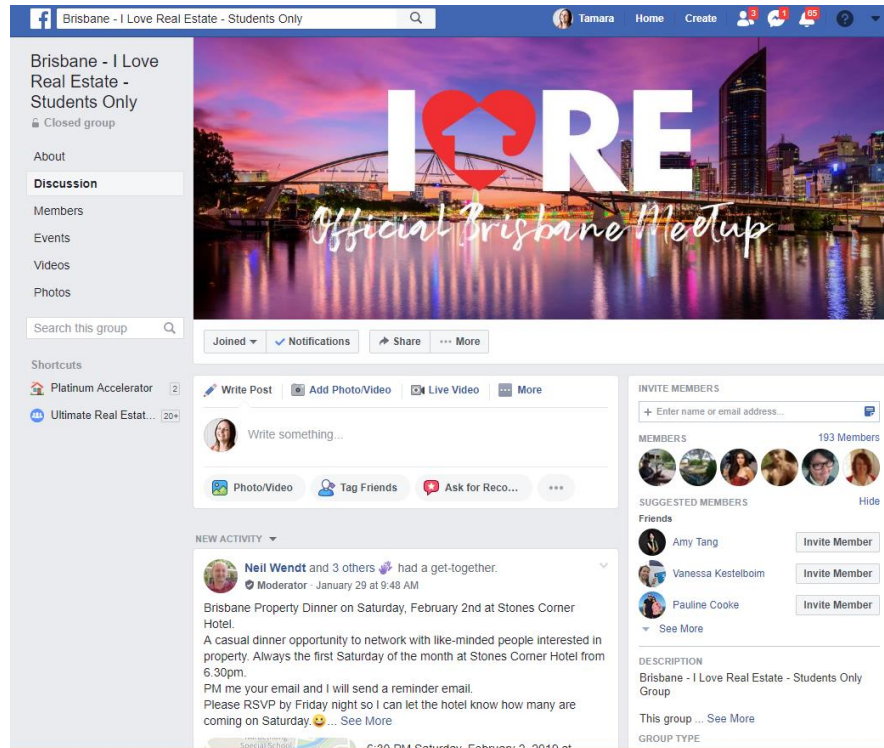
[Perth Student Meetup](#)

Platinum Student Meetups



ILRE Student Meetups

- ❖ Info & RSVP: Ultimate Website / ILRE Community / ILRE Brisbane Meetup / Link to FB Page



GRADUATING PLATINUMS



○ ??????????



STUDENTS OF THE MONTH

PLATINUM

Changing Unwanted Habits



I LOVE
REAL ESTATE

**Change Your Life by
Changing One Habit**





In 1932, **Frederic Bartlett** was working at Cambridge University when he conducted one of the most famous cognitive psychology experiments of all-time. For this research study, Bartlett recited a Native American folk tale called “The War of the Ghosts” to each participant.

The Power of Schemas

In psychology terms, Bartlett's subjects were displaying what is known as a “**schema**.” A schema is a set of preconceived ideas that your brain uses to perceive and interpret new information.

We form schemas based on **our experiences in life**. Once they are formed, however, schemas have a tendency to remain unchanged — even in the face of contradictory information.

In other words, your brain creates an “**auto-pilot**” version of how it thinks the world should work, and sometimes you keep using it even when it's no longer true or helpful. This is why Bartlett's subjects changed the details of the story. The original version didn't fit the way they thought the world should work, so they adjusted it until it seemed more reasonable.

This is important because schemas not only impact the memories you have about the outside world, but also the things you believe about yourself.

If a mother tells her daughter she looks like a tom boy, her daughter may react by choosing activities that she imagines a tom boy would do. Conversely, if the mother tells her she looks like a princess, her daughter might choose activities thought to be more feminine... the individual chooses activities based on expectations instead of desires.

Imagine that little girl after she has grown up. It's easy to see how the schemas and beliefs that were formed early on could continue to impact her actions years later.

Unlearning What You Believe to be True

Old beliefs and experiences tend to push you in a certain direction or color your thoughts in a certain way

... but they aren't necessarily serving you anymore.

It's good to take a step back and think about your beliefs about life. Ask yourself, ***“Is this true? Or am I just limiting myself with these beliefs?”***

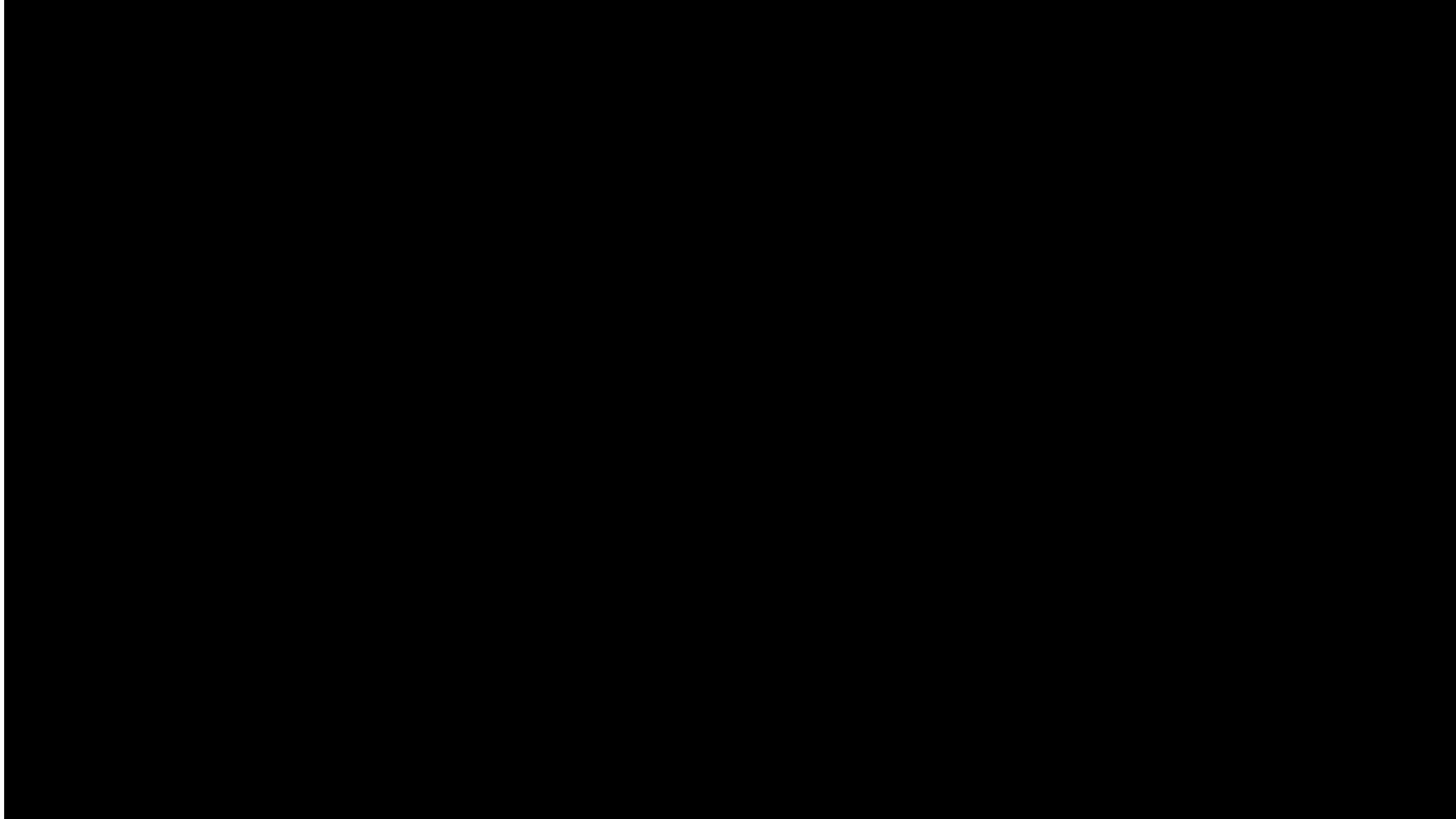
For example...

Getting healthy — is eating junk food really a way to “treat yourself” and “enjoy the good stuff in life” ... or are you telling yourself a story that isn't really true?

Building a property portfolio — do you really need to wait until X happens before you start that project? Or are you just telling yourself a story that allows you to maintain what you're currently doing instead of chasing what you're capable of doing?

Traveling the world — is it true that “only single people without kids” can travel far and wide? Or is that just an expectation left over from what you have typically seen?

Here is a cool video on changing habits



- <https://www.youtube.com/watch?v=CojSlsMwDOg>

What old beliefs are you still carrying that aren't serving you anymore?

Sometimes you have to unlearn the things that you believe to be true. You don't have to see the world the same way you've always seen it. Just because it was true in the past, doesn't mean it's true today. And just because you learned something one way doesn't mean you learned it the best way.

Don't let yesterday's beliefs dictate the story that you live out today.

Think about this and where you are at right now and discuss what untrue beliefs might be holding you back

PLATINUM

Accountability
Monthly Goals



I LOVE
REAL ESTATE

Buddy Process Follow-Up



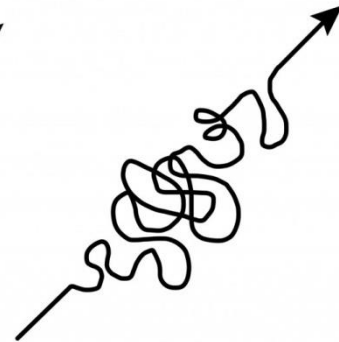
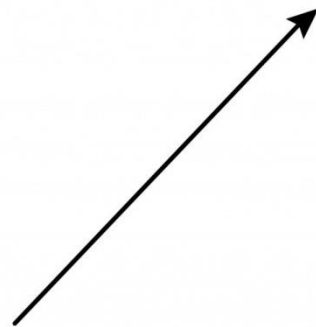
- Groups of 3 with others you don't know
- Active Platinum Partners split up (Non-active partners stay together)
- Exchange Mobile No.
- Schedule to "TALK" weekly
- Finishing students partner together

Last Month In Review

Share Your Successes and Challenges

SUCCESS

SUCCESS



what people think
it looks like

what it really
looks like

This Months Plan

Share Your
Key Goals For Month

Monthly
✓
goals



Tea / Coffee Break

PLATINUM

STRATA TITLING

TRIVIA!



I LOVE
REAL ESTATE

Activity

- Groups of 3 people
- Graduates please answer last in your group – give others a go first 😊
- Record your answers on the recording sheet



TRIVIA – RECORDING SHEET



QU	ANSWER	POINTS
1		
2		
3		
4		
5		
6		
7		
8		
9		
10		
11		
12		
13		
14		
15		
16		
17		
18		
19		
20		
21		
22		
23		

Strata Process

- Phase 1 – Design, Deal Finding, Due Diligence
- Phase 2 – Building Works & Team
- Phase 3 – Paperwork Process, Costs & Finance

QUESTIONS THEN ANSWERS

PHASE 1

Design, Deal Finding, Due Diligence

Question 1

List the 4 title types in Australia?

1) _____

2) _____

3) _____

4) _____



Question 2

True or False:

“I am buying a 3 bedroom, 2 bathroom, 1 car strata titled townhouse, its 155m² in size and has an exclusive use area of 35m². After settlement, I will own 155m² of land?”



Question 3



FOR SALE:

Block of 6 units on one title. All in sound condition.

4 units - 2 beds, 1 bath, 1 car

2 units - 1 bed, 1 bath, 1 car

Strata title and profit!! STCA.

Price is firm: \$600,000

Be quick, this won't last long

Question 3 Cont.

Your research outcomes:-

- Purchase costs (incl stamps, inspections etc.) = \$36K
 - Land tax approx: \$6K
 - Cashflow neutral for holding costs purposes
 - 1 bedroom, 1 bath units sell for \$90K (sound condition)
 - 2 bedroom, 1 bath units sell for \$150K (sound condition)
 - Average days on market for both units = 70 days
 - Building requires \$20K work to upgrade to NCC (BCA)
 - Strata fees including all council fees, inspections, plans etc. = \$30K
 - Selling costs are 3% of end value
1. Calculate the GST on sale of all units?
 2. Is there any gross profit (before income tax) if selling all units?

Question 4

Who would be the most appropriate person to have inspect the property to assess whether or not the property is compliant with the National Construction Code (NCC)?

- a) Dymphna Boholt
- b) Building Certifier / Building Surveyor
- c) Carpenter
- d) Civil Engineer



Question 5



TRUE OR FALSE:

When you look at purchasing this existing block of 4 units on one title, you notice that there is already 4 carparks which automatically means that parking requirements are met?

Question 6

What am I?

I am part of a whole. However, I am committed to one only.

I can be used but not individually owned.

I can be various sizes.

I am defined by law.

Question 7

List 5 ways to search for a strata title opportunity:

1) _____

2) _____

3) _____

4) _____

5) _____

ANSWERS

Design, Deal Finding, Due Diligence

Question 1

4 Points

List the 4 title types in Australia?

- 1) Torrens Title
- 2) Company Title
- 3) Strata Title
- 4) Community Title



Question 2

1 Point

True or False:

“I am buying a 3 bedroom, 2 bathroom, 1 car strata titled townhouse, its 155m² in size and has an exclusive use area of 35m². After settlement, I will own 155m² of land?”



FALSE – You don't own the land when doing strata title

Question 3



FOR SALE:

Block of 6 units on one title. All in sound condition.

4 units - 2 beds, 1 bath, 1 car

2 units - 1 bed, 1 bath, 1 car

Strata title and profit!! STCA.

Price is firm: \$600,000

Be quick, this won't last long

Question 3 Cont.

2 Points

Your research outcomes:-

- Purchase costs (incl stamps, inspections etc.) = \$36K
 - Land tax approx: \$6K
 - Cashflow neutral for holding costs purchase
 - 1 bedroom, 1 bath units sell for \$150K (condition)
 - 2 bedroom, 1 bath units sell for \$180K (condition)
 - Average days to sell = 70 days
 - Built to upgrade to NCC (BCA)
 - Including all council fees, inspections, plans etc. = \$30K
 - Council fees are 3% of end value
1. Calculate the GST on sale of all units?
 2. Is there any gross profit (before income tax) if selling all units?

1. NO GST ON STRATA EXISTING UNITS (NO SUBSTANTIAL CHANGE IN NATURE)
2. YES - \$64,600 GROSS PROFIT

Question 4

1 Point

Who would be the most appropriate person to have inspect the property to assess whether or not the property is compliant with the National Construction Code (NCC)?

- a) Dymphna Boholt
- b) Building Certifier / Building Surveyor**
- c) Carpenter
- d) Civil Engineer



Question 5

1 Point



TRUE OR FALSE:

When you look at purchasing this existing block of 4 units on one title, you notice that there is already 4 carparks which automatically means that parking requirements are met.

FALSE – You should always check with the town planner to make sure parking is adequate.

Question 6

1 Point

What am I?

I am part of a whole. However, I am committed to one only.

I can be used but not individually owned.

I can be various sizes.

I am defined by law.

EXCLUSIVE USE AREA

Question 7

5 Points

List 5 ways to search for a strata title opportunity:

- 1) Search online using specific terms
- 2) Speak with consultants
- 3) Letter box drop / door knocking
- 4) Advertisement – i.e. Place an add on gumtree / classifieds
- 5) Find specialist agents who deal with unit complexes



Leader Board

PHASE 2

Building Works & Team

Question 8

Which professional is the **best** to speak to regarding adequate car parking ratios for strata-titling a block of residential apartments:

- a) Town planner
- b) Traffic Engineer
- c) Building Certifier/ Building Surveyor
- d) Land Surveyor



Question 9

List at least 4 types of fire rated products:



1) _____

2) _____

3) _____

4) _____

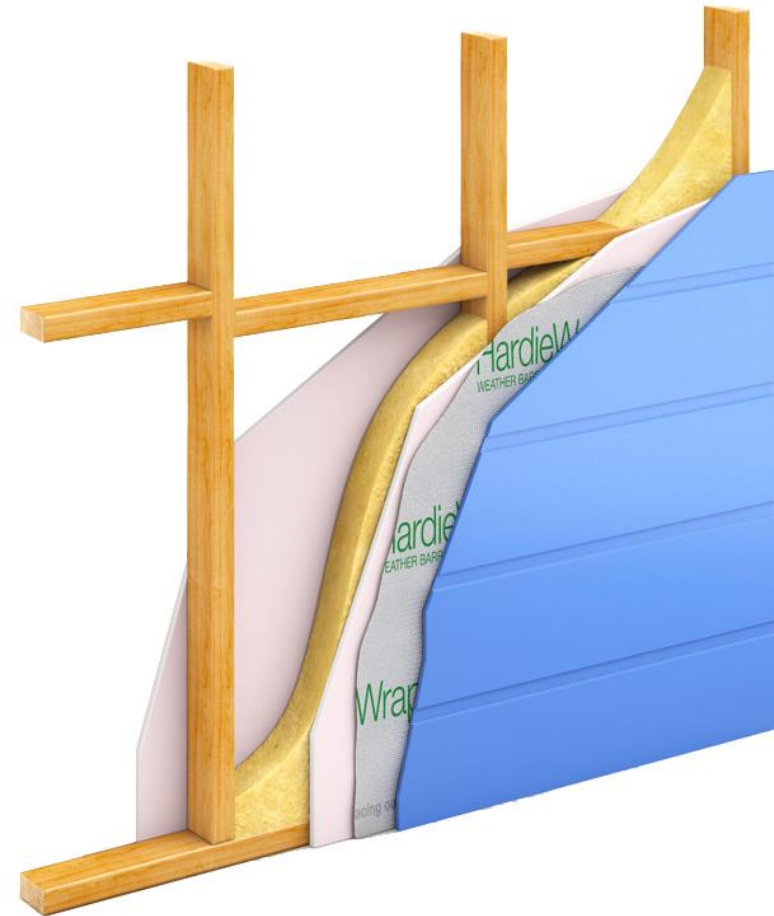
Question 10

What does each sequence in the 60/60/60 fire rating relate to:

1) _____

2) _____

3) _____

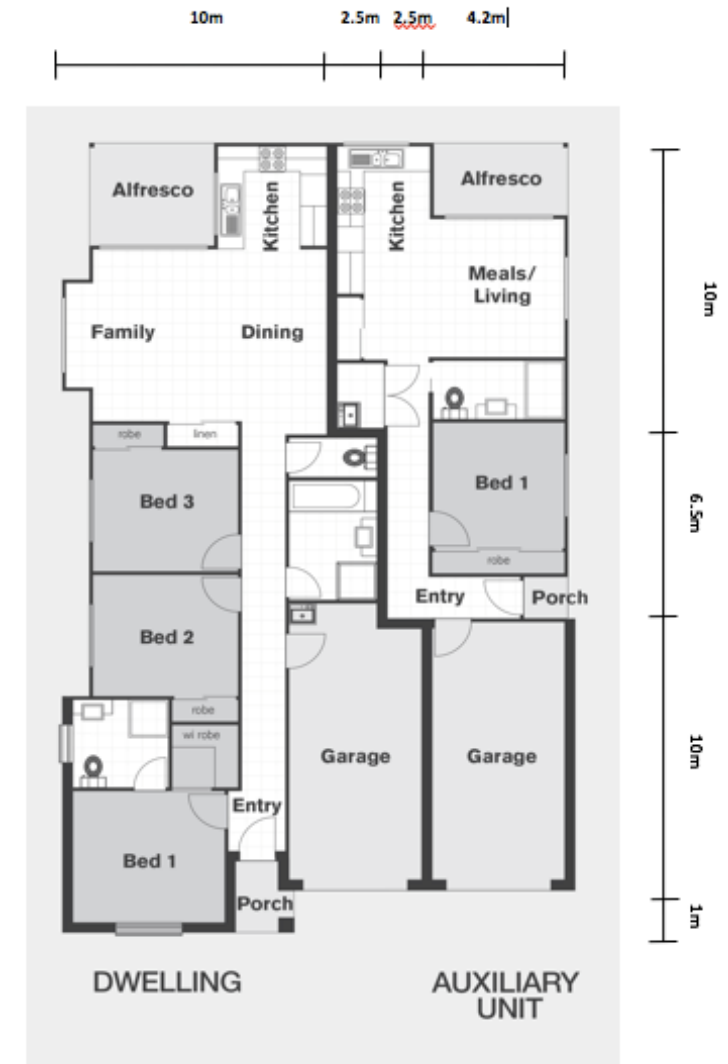


Question 11

Calculate the total cost for installing a fire rated wall between the primary residence and auxiliary unit based on:

1. Fyreccheck plasterboard @ \$75/m² installed
2. Wall (to the roof line) height of 3.6m

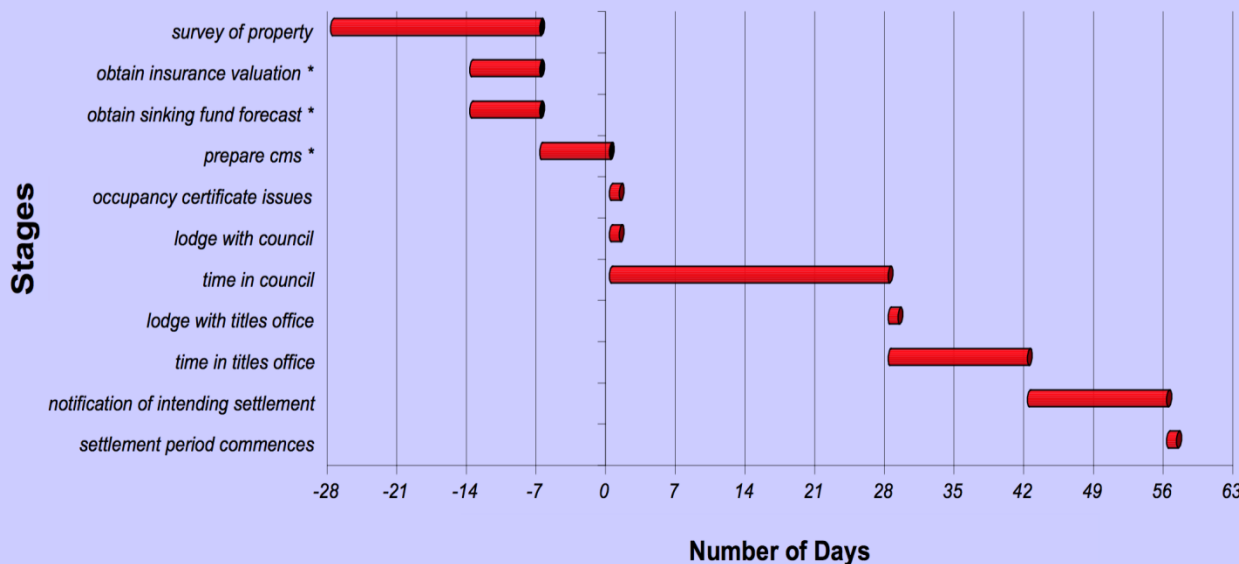
- Assume sheeting both sides of wall
- Assume flat roof



Question 12

Who is the consultant that you would engage to estimate the replacement cost for body corporate insurance?

*Body Corporate Establishment Time Frames
(based on the Certificate of Occupancy Issue Date
and Satisfaction of all Development Approval Conditions - Day 0)*



1. Building certifier
2. Insurance broker
3. Solicitor
4. Body corporate manager
5. Quantity surveyor

Question 13

When it comes to upgrading the building, you must comply to which document:

- a) Council planning scheme
- b) National Construction Code
- c) Health and well being act
- d) The residential tenancies act



Question 14

I am able to withstand high amounts of pressure.

Proximity is important.

I'm a friend in times of emergency.

I see the colour red.

What am I?

Question 15

Which of the following team members are **NOT** required for the strata titling process on an existing block of units:

Land Surveyor

Solicitor

Hydraulic
engineer

Town planner

Geotechnical
Engineer

Finance
Strategist



ANSWERS

Building and Team

Question 8

1 Point

Which professional is the **best** to speak to regarding adequate car parking ratios for strata-titling a block of residential apartments:

a) Town planner

b) Traffic Engineer

c) Building Certifier/ Building Surveyor

d) Land Surveyor



Question 9

4 Points

List at least 4 type of fire rated products:



Fire mats, tape

Fire barrier duct wrap

1) **Fyrecheck plasterboard**

2) **Brick or blockwork**

3) **Intumescent paint**

4) **Mineral Wool**

Fire service collars

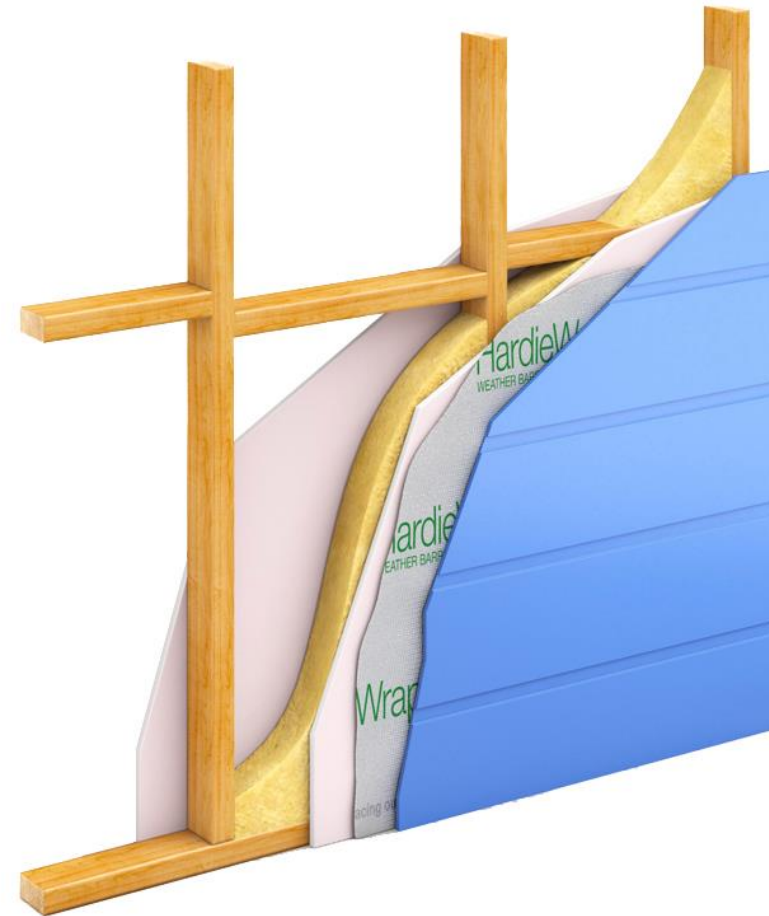
Fire rated doors

Question 10

3 Points

What does each sequence in the 60/60/60 fire rating relate to:

- 1) **Structural adequacy** _____
- 2) **Structural integrity** _____
- 3) **Thermal rating** _____



Question 11

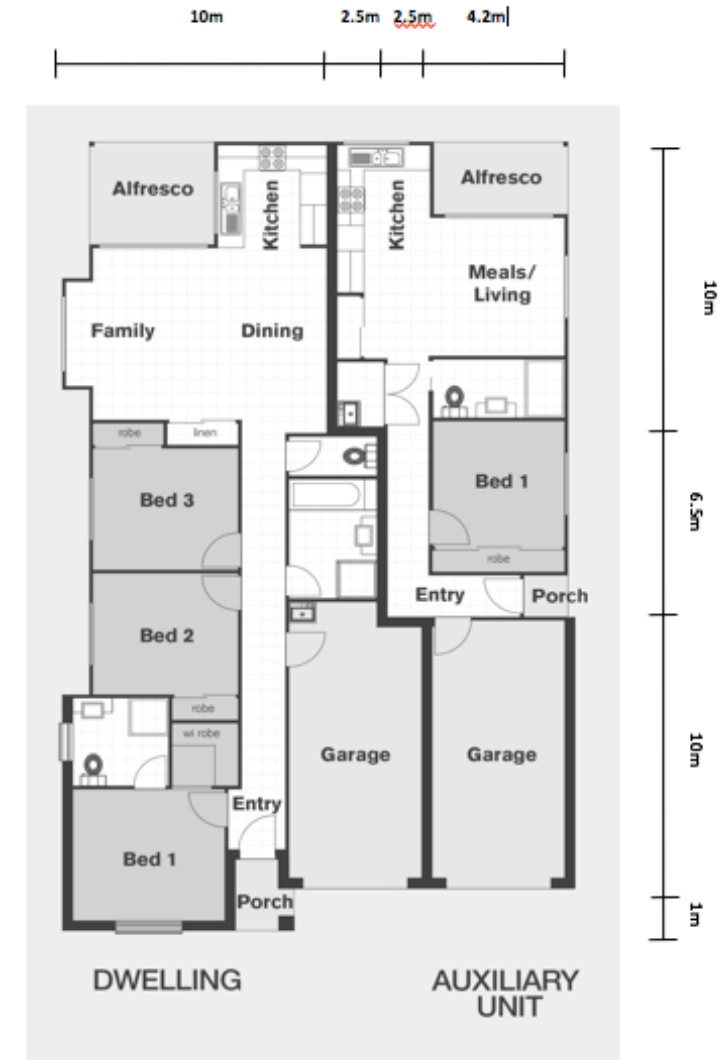
5 Points

Calculate the total cost for installing a fire rated wall between the primary residence and auxiliary unit based on:

1. Fyrecheck plasterboard @ \$75/m² installed
2. Wall (to the roof line) height of 3.6m

Answer \$17,010

(31.5m length wall x 3.6m height = 113.4m² x 2 walls. 226.8m² x \$75 = \$17,010)

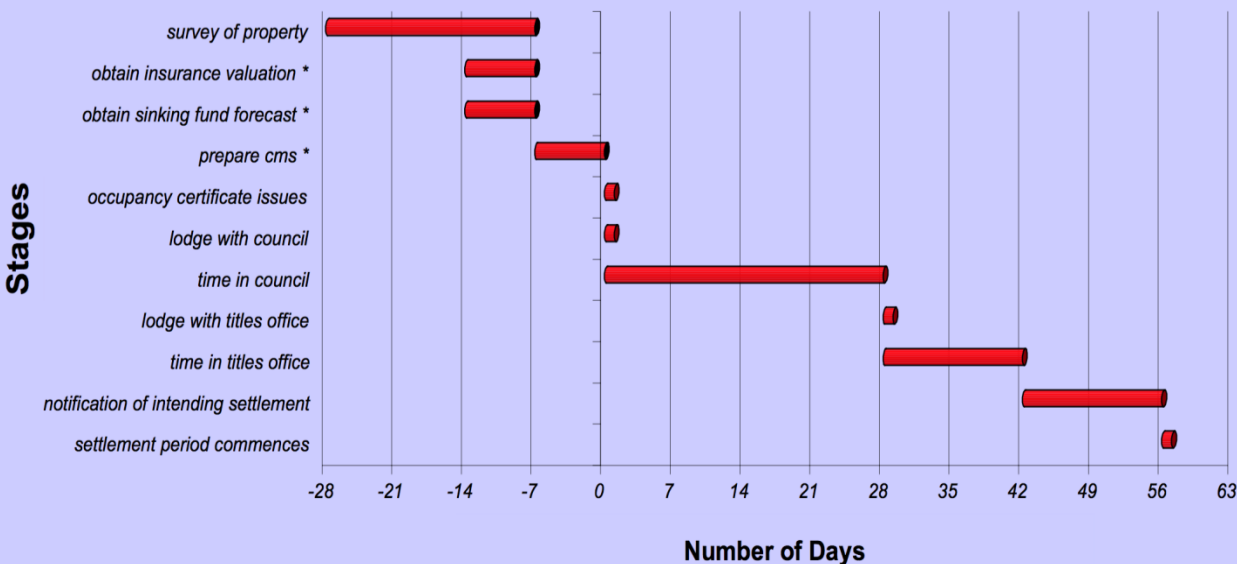


Question 12

1 Point

Who is the consultant that you would engage to estimate the replacement cost for body corporate insurance?

*Body Corporate Establishment Time Frames
(based on the Certificate of Occupancy Issue Date
and Satisfaction of all Development Approval Conditions - Day 0)*



1. Building certifier
2. Insurance broker
3. Solicitor
4. Body corporate manager
5. Quantity surveyor

Question 13

1 Point

When it comes to upgrading the building, you must comply to which document:

- a) Council planning scheme
- b) National Construction Code
- c) Health and well being act
- d) The residential tenancies act



Question 14

1 Point

I am able to withstand high amounts of pressure.

Proximity is important.

I'm a friend in times of emergency.

I see the colour red.

What am I?

Fire Hydrant

Question 15

1 Point

Which of the following six team members are **NOT** required for the strata titling process on an existing block of units:

- Land Surveyor
- Solicitor
- Hydraulic engineer
- Town planner
- Geotechnical Engineer
- Finance Strategist





Leader Board

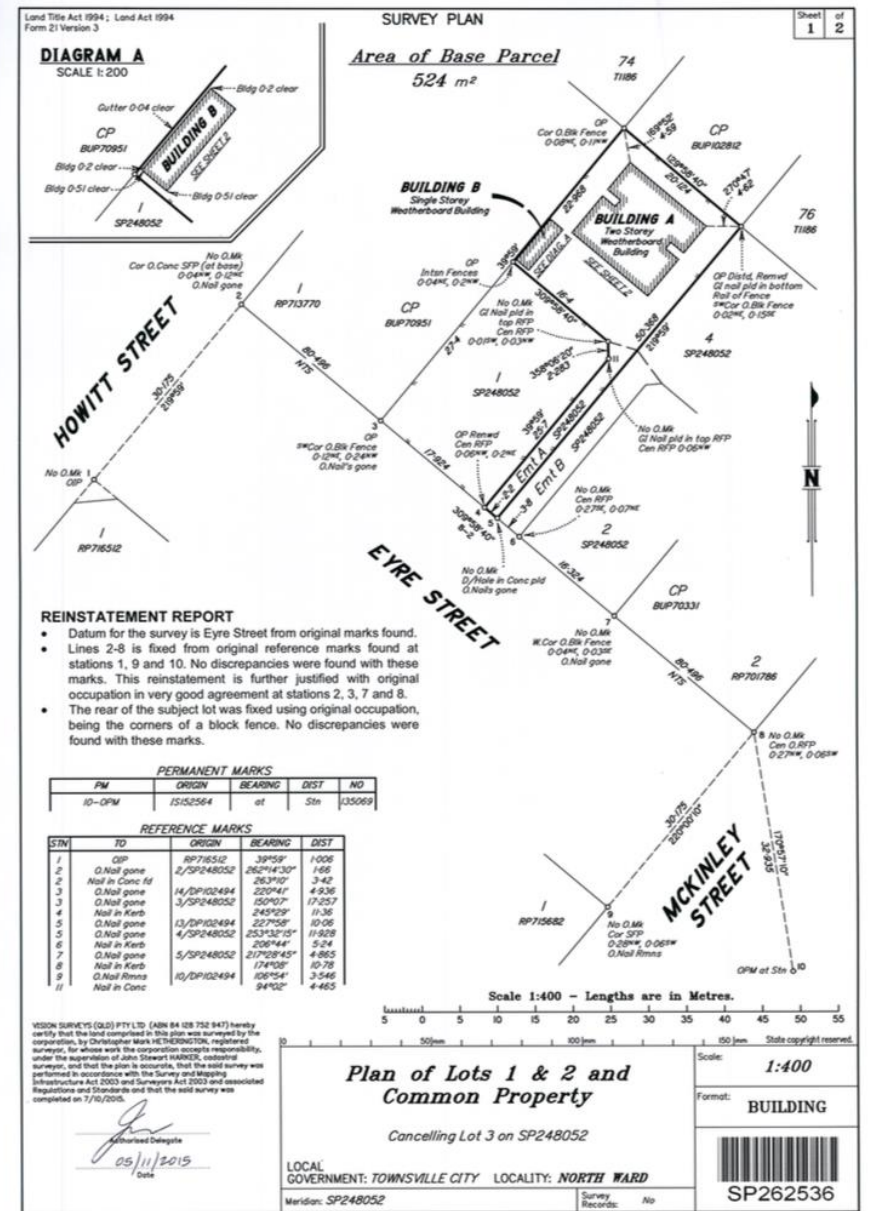
PHASE 3

Paperwork Process, Costs & Finance

Question 16

Reading off the survey plan:

- 1) How many new lots are being created from the strata process?
- 2) How many lots are being cancelled by the strata process?
- 3) What is the new survey plan number?
- 4) Is it OK to fold this plan?



Question 17

List 4 components of a Community Management Statement.

1) _____

2) _____

3) _____

4) _____



Question 18

In 30 seconds, list as many Body Corporate By-laws as you can think of for a multi unit development.

Item	Item

Question 19

Put in order the 6 major stages of the strata titling paperwork process:

Plan Sealing

Survey Plan

Sinking Fund Payment
By Developer

First Body Corp
Meeting

Titles Department
Lodgment

Mortgagee Consent

Question 20

Which 6 costs are specific **ONLY** to Strata Titling?

Item	Item	Item
Town planner fee	Council plan sealing fees	Development approval
Selling costs	Property management fees	Solicitor fee – Title lodgment
Survey – Building format plans	Body corporate set-up	Body corp building insurance on completion
Community management statement prep	Sales commission	Building certifier fee
Construction cost	Interest	Titles Dept. lodgment fee
Insurance report	Fire evacuation plan	Legal fees
GST	Building certifier fee	Body corporate sinking fund report

Question 21

3 units strata titled will cost the same in hold costs to the same 3 units un-strata titled.

a) True

b) False



Question 22

3 units strata titled will cost the same in hold costs to the same 3 units un-strata titled.

4 REASONS WHY?



1) _____

2) _____

3) _____

4) _____

ANSWERS

Paperwork Process, Costs & Finance

4 Points

Question 16

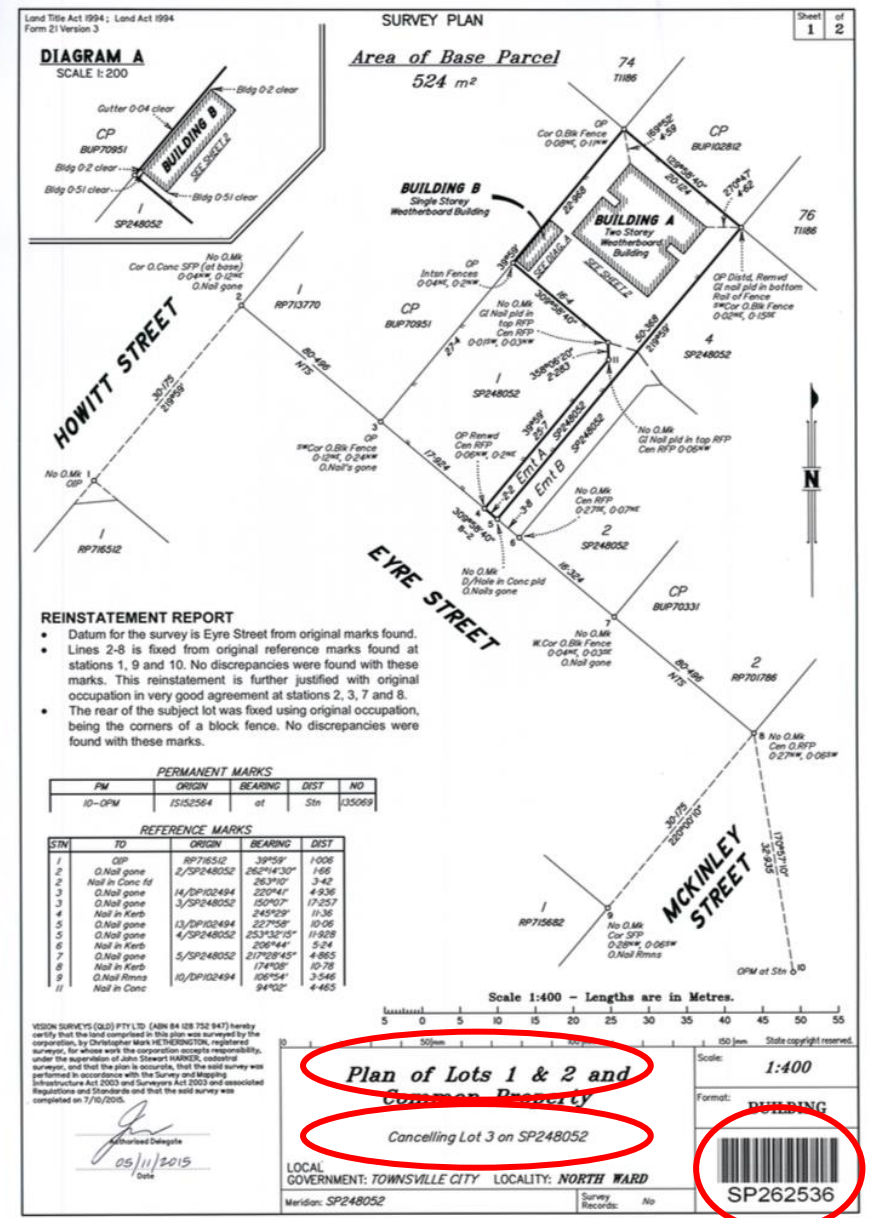
Reading off the survey plan:

1) How many new lots are being created from the strata process? **2**

2) How many lots are being cancelled by the strata process? **1**

3) What is the new survey plan number? **SP262536**

4) Is it OK to fold this plan? **NO!!!!!!**



PLATINUM

Question 17

4 Points

List 4 components of a Community Management Statement.

- 1) Lot Entitlement Schedule
- 2) By-laws
- 3) Easement Descriptions
- 4) Exclusive Use Area Descriptions
 - Exclusive Use Plan
 - Services Location Diagram
 - Draft Budget



Question 18

In 30 seconds, list as many Body Corporate By-laws you can think of for a unit development project.

Item	Item

Question 18

1/2 Point each
Max 10 points

In 30 seconds, list as many Body Corporate By-laws you can think of for a unit development project.

Item	Item
Noise & Nuisance	Appearance of Lots
Vehicles & Parking	Keeping of Animals
Obstruction	Signage
Damage to Lawns / Common Property	Water Use
Behavior of Invitees	Vermin
Auction & Garage Sales	Balconies / Terraces
Rubbish	Utility Services & Retaining Walls
Aerials	Notices

Question 19

Put in order the 6 major stages of the strata titling paperwork process:

Plan Sealing

Survey Plan

Sinking Fund Payment
By Developer

First Body Corp
Meeting

Titles Department
Lodgment

Mortgagee Consent

Question 19

6 Points

Put in order the 6 major stages of the strata titling paperwork process:

1. Survey Plan
2. Plan Sealing
3. Mortgagee Consent
4. Titles Department Lodgment
5. Sinking Fund Payment By Developer
6. First Body Corp Meeting

Question 20

Which 6 costs are specific **ONLY** to Strata Titling?

Item	Item	Item
Town planner fee	Council plan sealing fees	Development approval
Selling costs	Property management fees	Solicitor fee – Title lodgment
Survey – Building format plans	Body corporate set-up	Body corp building insurance on completion
Community management statement prep	Sales commission	Building certifier fee
Construction cost	Interest	Titles Dept. lodgment fee
Insurance report	Fire evacuation plan	Legal fees
GST	Building certifier fee	Body corporate sinking fund report

Question 20

6 Points

Which 6 costs are specific **ONLY** to Strata Titling?

Item	Item	Item
Town planner fee	Council plan sealing fees	Development approval
Selling costs	Property management fees	Solicitor fee – Title lodgment
Survey – Building format plans	Body corporate set-up	Body corp building insurance on completion
Community management statement prep	Sales commission	Building certifier fee
Construction cost	Interest	Titles Dept. lodgment fee
Insurance report	Fire evacuation plan	Legal fees
GST	Building certifier fee	Body corporate sinking fund report

Question 21

1 Points

3 units strata titled will cost the same in hold costs to the same 3 units un-strata titled?

a) True

b) False



Question 22

4 Points

3 units strata titled will cost the same in hold costs to the same 3 units un-strata titled.

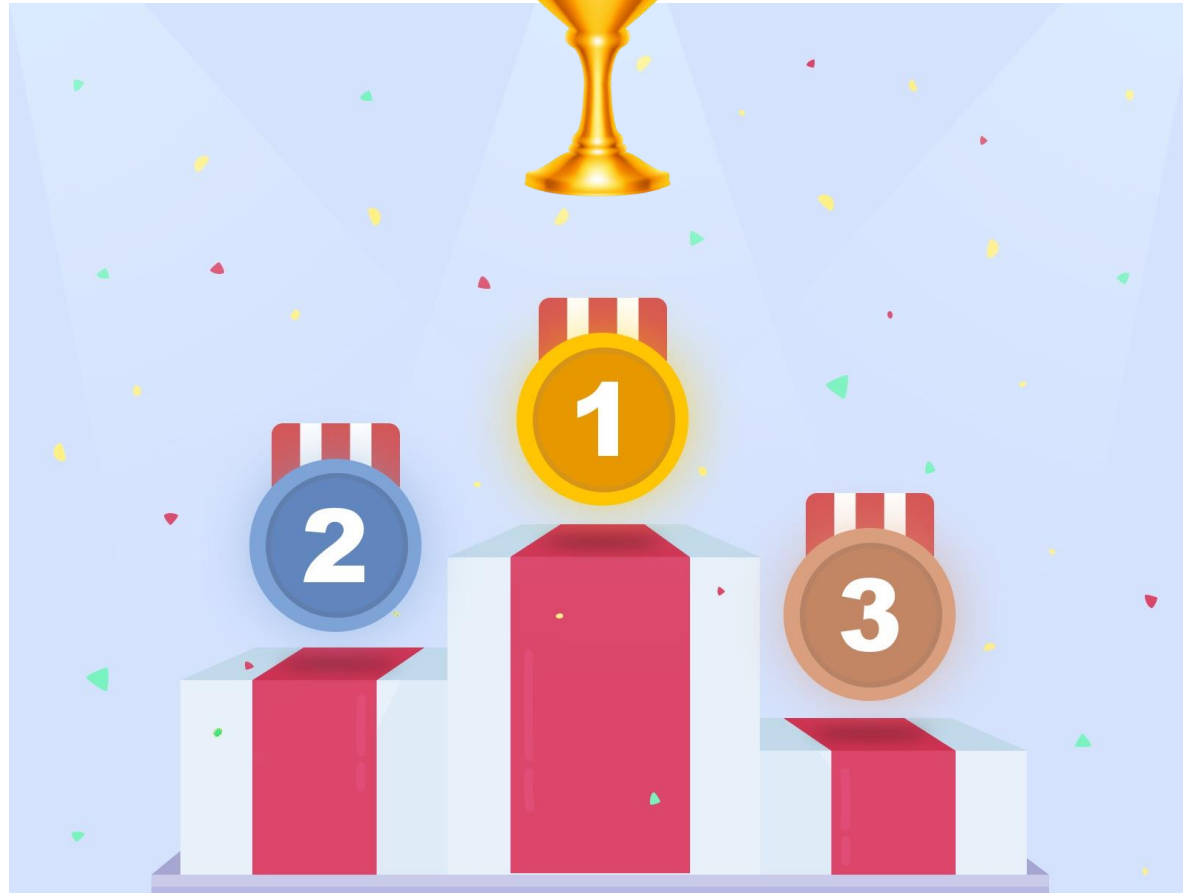
4 REASONS WHY?



- 1) Higher Council Rates Costs
- 2) Body Corp Levies
- 3) Higher Water, Sewer, Insurance Costs
- 4) Land Tax



Leader Board



QUESTIONS?