

PLATINUM

October 2025
Rooming
Accommodation
Mastermind
Event

Brisbane

**Tamara Read,
Nicolle Beer &
Christine Hamilton**
QLD State Coaches



I LOVE
REAL ESTATE

Event Outline -

- 6:00 – 6:30 Networking
- 6:30 - Start
- 6:30 – 6:45 Introductions
- 6:45 – 8:00 Accountability
- 8:00 – 8:30 Networking Break
- 8:30 – 10:30 Rooming Accommodation – Plan Reading & Modification

Workshop Format

- Use microphone
- Involve everyone in the conversation
- Be supportive
- Feel free to order food and drinks downstairs



Housekeeping



WELCOME NEW PLATINUM'S



??????????????

2025 DATES

- **1) PA Monthly Dates (Tuesday's)**

**New Venue - Pullman King
George Square 6pm start**

- ❖ 4th November
- ❖ 9th December

- **2) PA Nationals**
 - ❖ 5-7th Dec Melbourne

- **3) Ultimate Bootcamps**
 - ❖ 😊

- **4) Ultimate Other**
 - ❖ 14-16th Nov Super Conf - Melbourne

December – MELBOURNE PA National Conference

RSVP – ASAP!!!!

Leadership Day – PA Elites = Friday

INSERT IMAGE



Money Mind Mastery



Designed to tackle the top 4 Mindset issues that affect ILRE students.

Creating momentum toward success!

All sessions starting 7pm
Melb/Syd Time

- 27 October
- 24 November

Platinum Student Meetups

- ❖ PA Website / Platinum Schedule
- ❖ Must have your Facebook account / profile open to access the links

PLATINUM ACCELERATOR

[Home](#) [Education](#) [Meeting Recordings](#) [Coaches & Contact](#) [Platinum Schedule](#) [Community](#)

PA Student Meetup Groups

These Student Meetup groups are for ALL Platinum students only, both past and present. They are organised by Platinum students to facilitate networking between Platinums and staying connected with the awesome Platinum family. Typically they occur between the PA Monthly Meetings.

NOTE: You MUST have your Facebook Account/Profile open to access these links.

Brisbane Student Meetup



Student Organizer – Magen Humphreys

Click on the link below to access the Platinum Accelerator Facebook Events for each Brisbane Student Meetup. All of the upcoming dates, location, times and RSVP information is in these events.

[Brisbane Student Meetup](#)

Sydney Student Meetup



Student Organizer – Dindy Lusk

Click on the link below to access the Platinum Accelerator Facebook Events for each Sydney Student Meetup. All of the upcoming dates, location, times and RSVP information is in these events.

[Sydney Student Meetup](#)

Melbourne Student Meetup



Student Organizer – Aygun Ozkan

Click on the link below to access the Platinum Accelerator Facebook Events for each Melbourne Student Meetup. All of the upcoming dates, location, times and RSVP information is in these events.

[Melbourne Student Meetup](#)

Perth Student Meetup

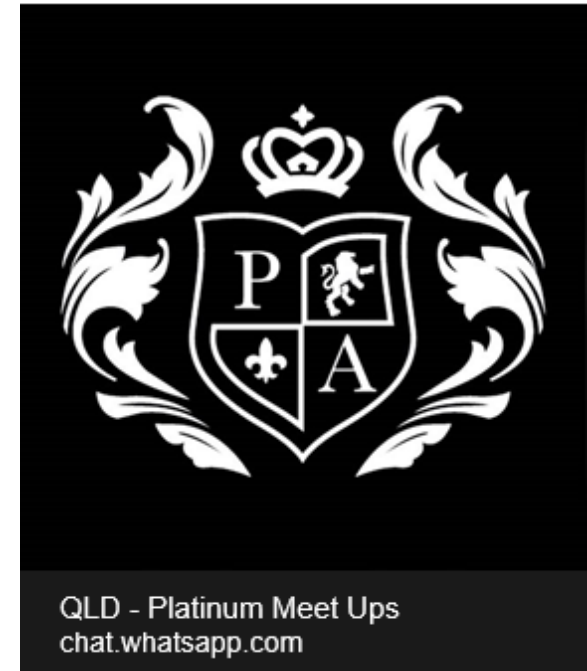


Student Organizer – Basia Garbowska & Heath Worlton

Click on the link below to access the Platinum Accelerator Facebook Events for each Melbourne Student Meetup. All of the upcoming dates, location, times and RSVP information is in these events.

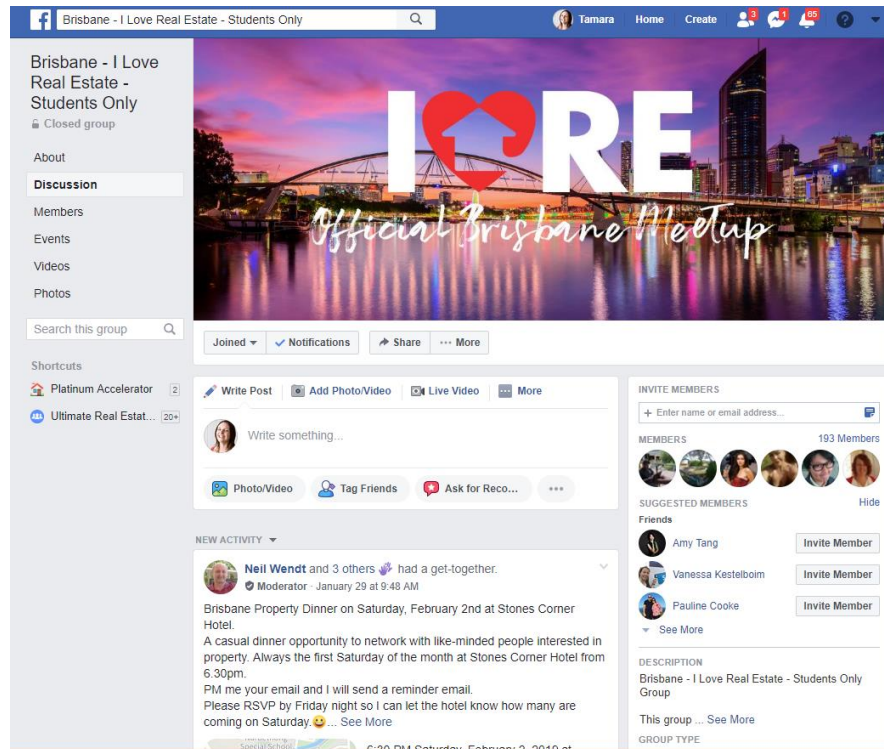
[Perth Student Meetup](#)

Platinum Student Meetups



ILRE Student Meetups

- ❖ Info & RSVP: Ultimate Website / ILRE Community / ILRE Brisbane Meetup / Link to FB Page



QLD Christmas Party



GRADUATING PLATINUMS



● ??????????



STUDENTS OF THE MONTH

PLATINUM



I LOVE
REAL ESTATE

.....
Life is 10% what
happens to us
and 90% how we
react to it.

.....
-Dennis P. Kimbro



Questions to Discuss

- What makes someone a good athlete? **Eg. Usan Bolt**
- Or a good leader? **Eg. If you google best leader in history you get – Abraham Lincoln, Barak Obama, Nelsen Mandela, Mahatma Gandhi, Mao Zedong, Churchill and Hitler**
- Or a good parent? **You fill in the blank**
- Or a good real estate investor or developer? **Harry Trigaboffen**
- Why do some people accomplish their goals while others fail?
- Are your answers to the above questions different for each one?

- Usually we answer these questions by talking about the talent of top performers.
 - *He/She is the most talented*
 - *He/She is the smartest*
 - *He/She is the best at*
- But I think we all know there is more to the story than that.
- In fact, when you start looking into it, your talent and your intelligence don't play nearly as big of a role as you might think. The research studies that I have found say that intelligence and talent only accounts for 30% of your achievement — and that's at the extreme upper end.
- So what makes a bigger impact than talent or intelligence?

Mental toughness

- Each year, approximately **1,300 cadets** join the entering class at the United States Military Academy, West Point. During their first summer on campus, cadets are required to complete a series of brutal tests
- Angela Duckworth, a researcher at the University of Pennsylvania, **conducted a study tracking the cadets.**
- In Duckworth study she **tracked 2441 cadets** across two intakes.
- She recorded their high school rank, SAT scores, Leadership Potential Score (which reflects participation in extracurricular activities), Physical Aptitude Exam and **Grit Scale** (which measures perseverance and passion for long-term goals).



Here's what she found out...

It wasn't strength or smarts or leadership potential that accurately predicted whether or not a cadet would finish Beast Barracks.

Instead, it was grit / mental toughness — the perseverance and passion to achieve long-term goals — that made the difference.

In fact, cadets who were one standard deviation higher on the Grit Scale were 60% more likely to finish Beast Barracks than their peers. It was **mental toughness** that predicted whether or not a cadet would be successful, not their talent, intelligence, or genetics.

When comparing two people who are the same age but have different levels of education, **grit** (and not intelligence) more accurately predicts which one will do better in life and accomplish more.

Talent is Overrated

**“HARD WORK BEATS
TALENT WHEN TALENT
DOESN'T WORK HARD”**
-TIM NOTKE

believe-toachieve.tumblr.com

Mental toughness is a measure of individual resilience and confidence that may predict success in sport, education and the workplace. ... "**Mental toughness**" is frequently used colloquially to refer to any set of positive attributes that helps a person to cope with difficult situations.

[Mental toughness - Wikipedia](https://en.wikipedia.org/wiki/Mental_toughness)

https://en.wikipedia.org/wiki/Mental_toughness

G.R.I.T. >

GUTS, RESILIENCE, INITIATIVE, TENACITY

- Mental toughness is built through **small wins**.
- It's the **individual choices** that we make on a daily basis that build our "**mental toughness muscle**."
- There will always be extreme moments that require incredible bouts of courage, resiliency, and grit ... but for 95% of the circumstances in life, toughness simply comes down to **being more consistent than most people**.

Summary of Angela's Book

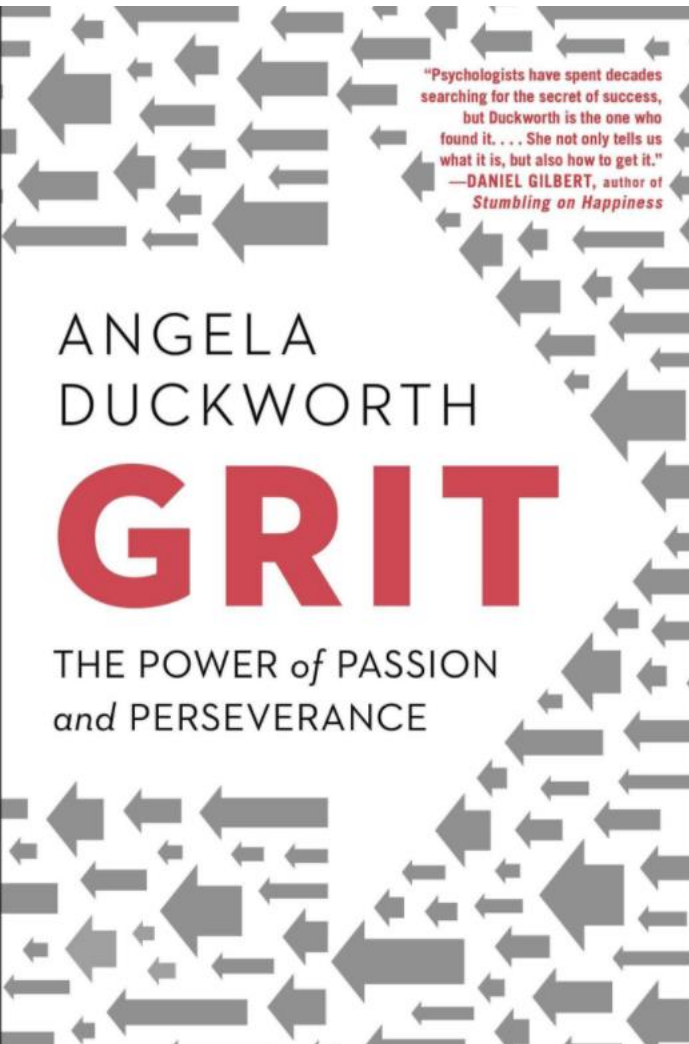
1. Grit is a better measurement for success than talent

You can have all the skills in the world, but if you don't know how to apply them and survive the long haul, you'll most likely never succeed

2. High performance comes from mundane acts

We're programmed by society to embrace the idea that natural talent leads to our own greatness. This myth is promoted because it lets us all off the hook and allows us not to have to work too hard. The reality couldn't be further from the truth.

By adding up thousands of mundane acts repeated over and over, we have the fuel we need to accomplish our goal.



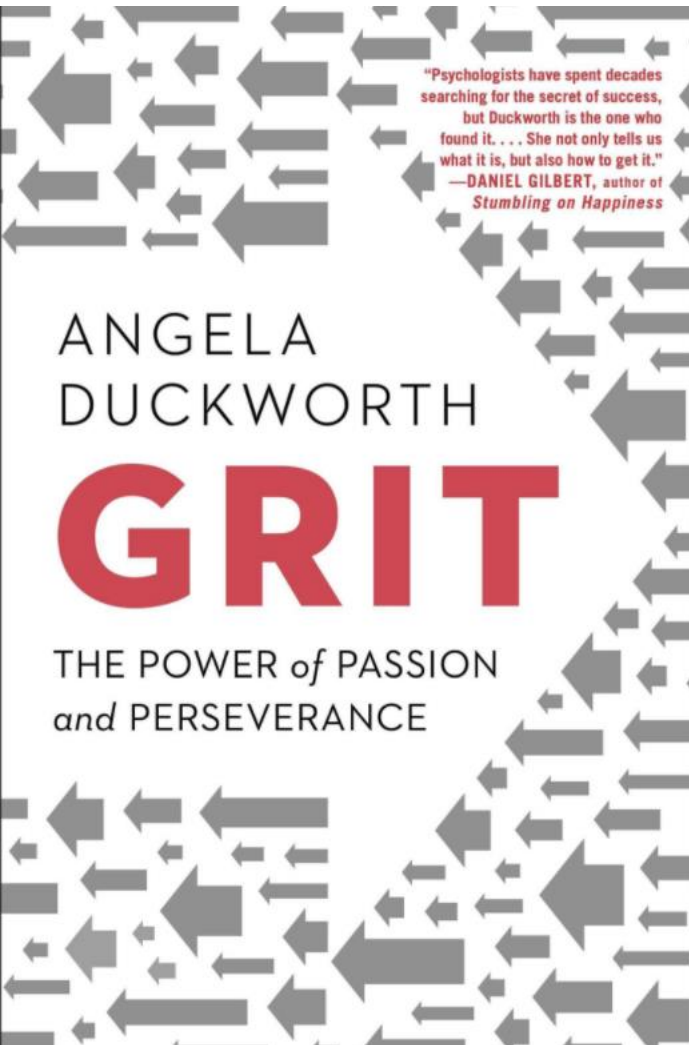
Summary of Angela's Book con't

3. Grit is about stamina not intensity

We can all be good at a task for a day. We can all give it all we've got for twenty-four hours and work harder than we ever have before. But, if we're only going to work hard at this task for a day and then not keep repeating the process regularly, then we will never reach our goal.

4. Decide what not to do

Success is about minimalism in the sense that it's what we choose not to do that is often more important than what we do. We have limited time and resources, so the way we funnel them both into certain activities will determine our long-term outcome.



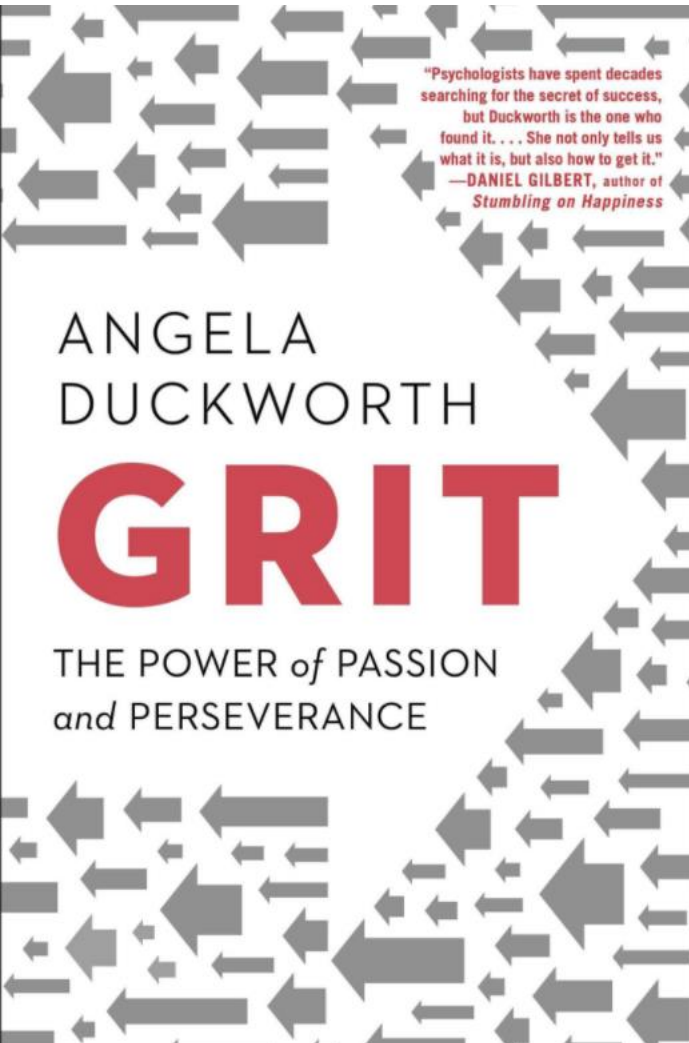
Summary of Angela's Book con't

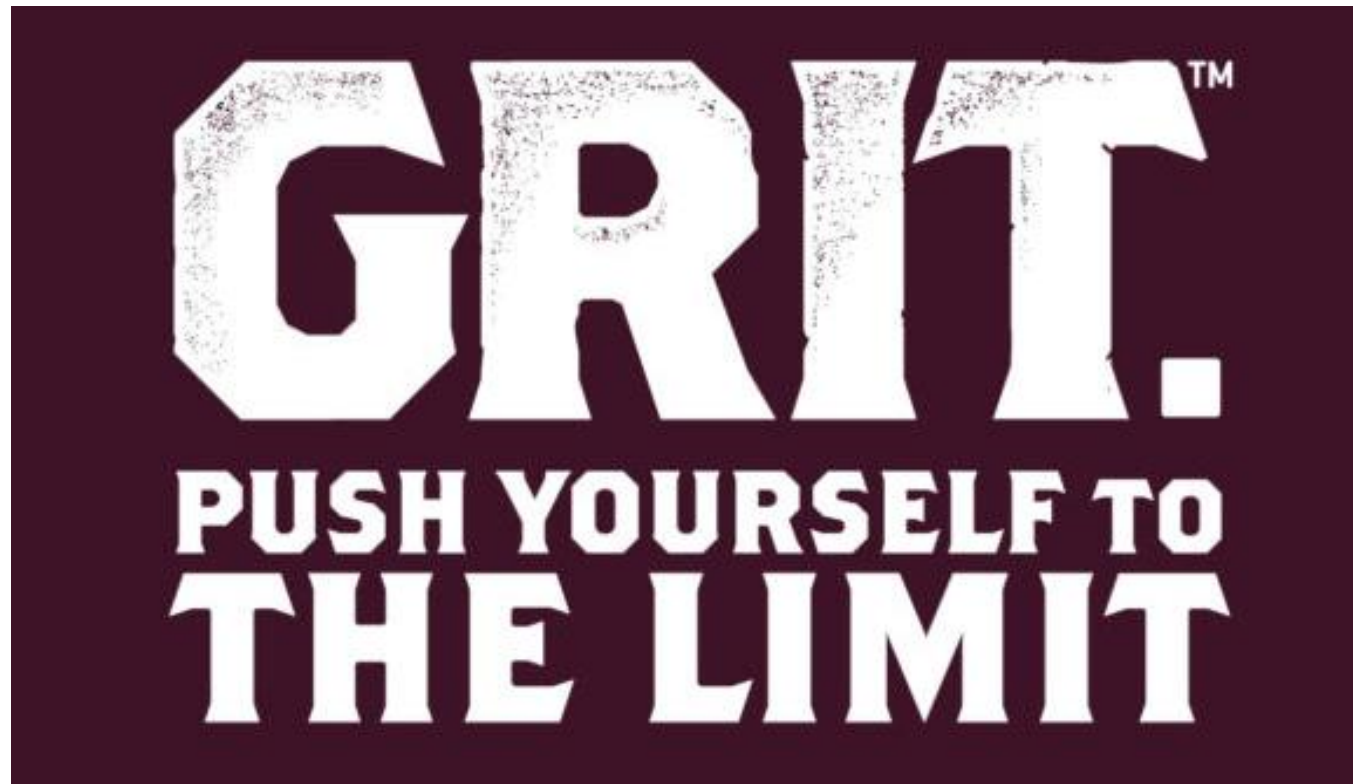
5. Purpose is the idea that what we do matters

It's the effect that we have on other people that often fuels our purpose further. **Through the study of people that have grit, what we know is that they're all able to find purpose beyond themselves.**

6. The way you deal with failure determines your success

It's the people who try a few different ways and then stop the practice of searching that fail. **Dealing with failure is about taking ownership of your problem and making yourself responsible for solving them.** At the same time, you can always ask others for a helping hand as long as you are taking the lead.





Life is about constant improvement and striving for the top of the mountain. Even when you reach the top, there is always a bigger mountain to try next time around. **The only constant between success and failure is courage.** As long as you have the courage, you'll keep getting back on the horse and trying again.



Define and discuss **what Mental Toughness means to you?**

What commitment can you make right now to start your road to greater mental toughness?

WHETHER YOU
THINK YOU CAN,
OR THINK YOU CAN'T,
YOU'RE RIGHT.

PLATINUM

Accountability
Monthly Goals



I LOVE
REAL ESTATE

Buddy Process Follow-Up



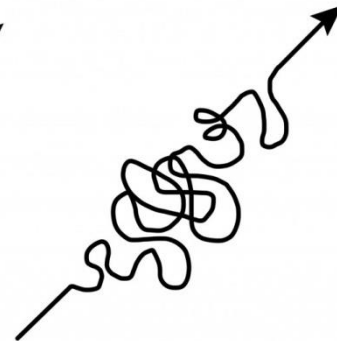
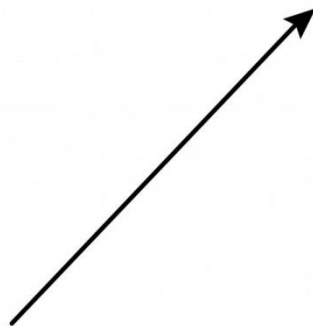
- Groups of 3 with others you don't know
- Active Platinum Partners split up (Non-active partners stay together)
- Exchange Mobile No.
- Schedule to "TALK" weekly
- Finishing students partner together

Last Month In Review

Share Your Successes and Challenges

SUCCESS

SUCCESS



what people think
it looks like

what it really
looks like

This Months Plan

Share Your
Key Goals For Month

Monthly
✓
goals



Tea / Coffee Break

PLATINUM

ROOMING ACCOMMODATION

PLAN READING & MODIFICATION



I LOVE
REAL ESTATE

Reading Plans

VERY IMPORTANT SKILL

Architectural Plan Set



- Site Plan
- Floor Plan
- Elevation Plans
- Cross Section Plans
- Window & Door Plan
- Plumbing & Roof Plan
- Electrical Plan
- 3D Plans



onplan pty ltd
PAUL CURRIE 0410 960 060 fax 5491 8586
IAN MCKINNON 0411 524 520 fax 5490 2214
central@onplan.com.au
po box 215, middle beach qld 4201
china 1123550
usa 1 26 106 920 uk 01 544 331 888

client

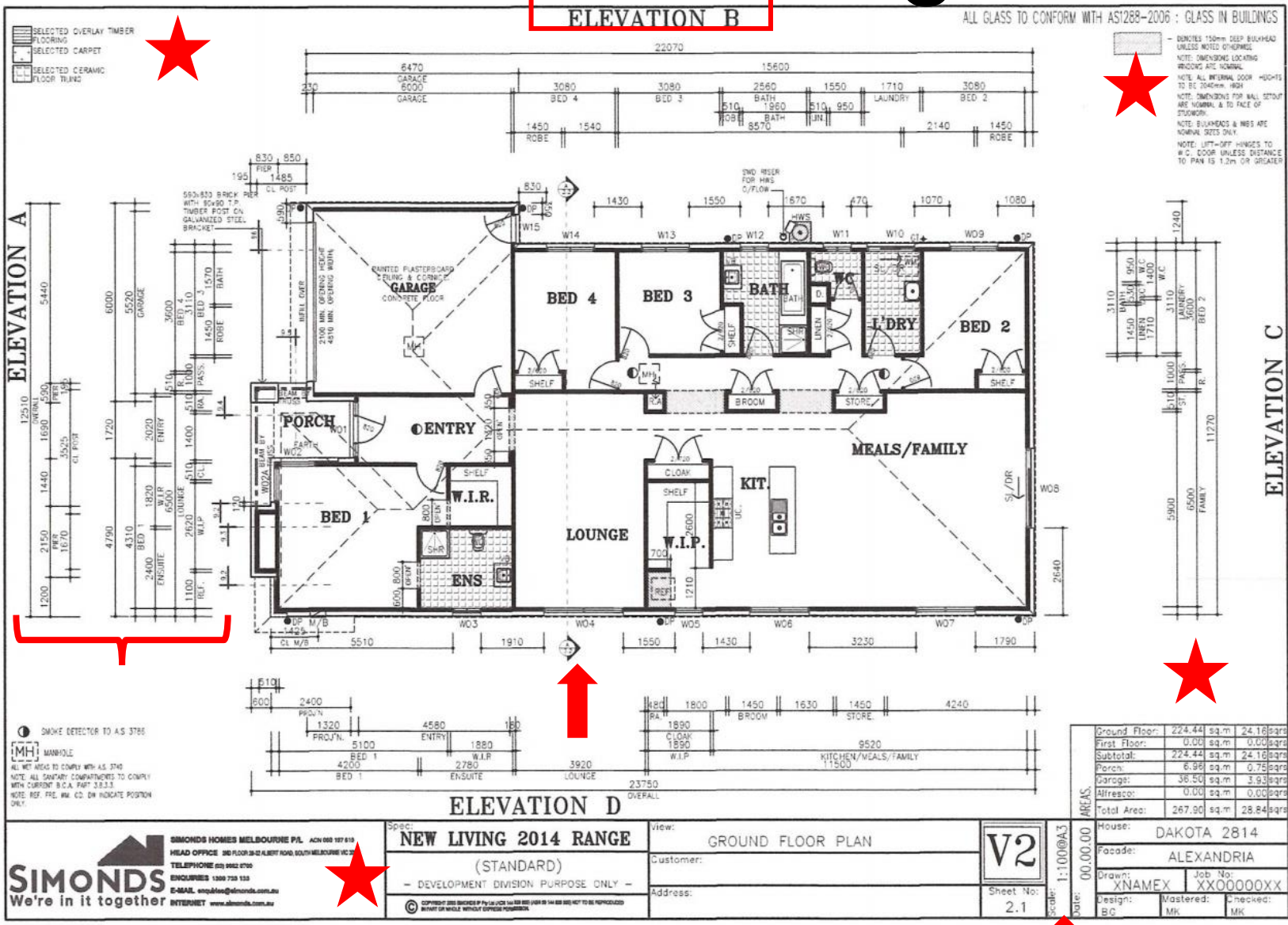
1 preliminary 1 04/06/08
2 approval 20/06/08
3 approved for plans 26/06/08

date april 2009
job no. 0622
scale 1:50

drawn by 121
checked by B
initial

sheet name 3d views
issue approval

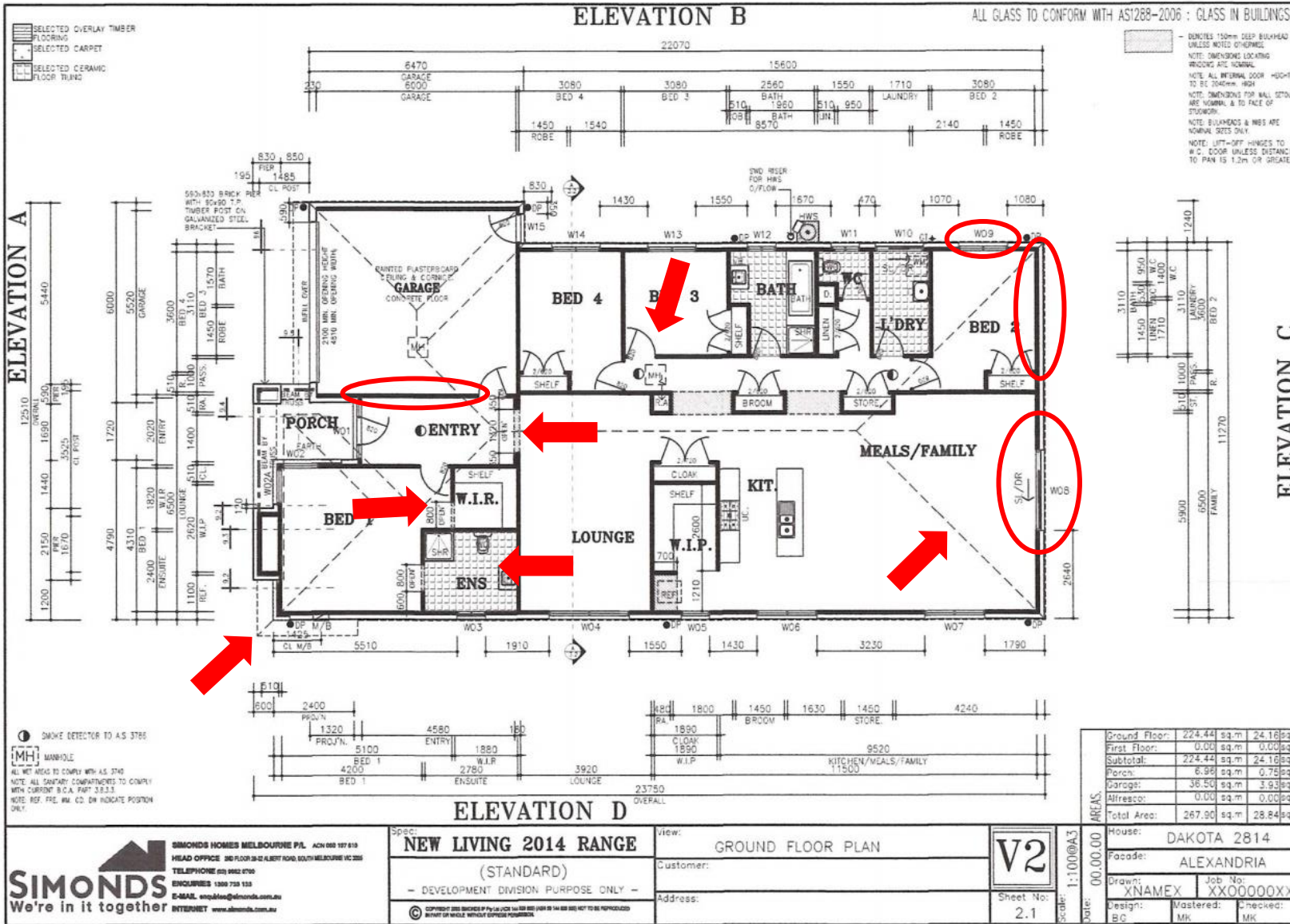
Reading Floor Plans



- Title block – Note amendment date
- Scale
- Notes
- Area measurements
- Dimensions
- Elevation notation
- Cross section points
- North Arrow – Site plan
- Floor coverings



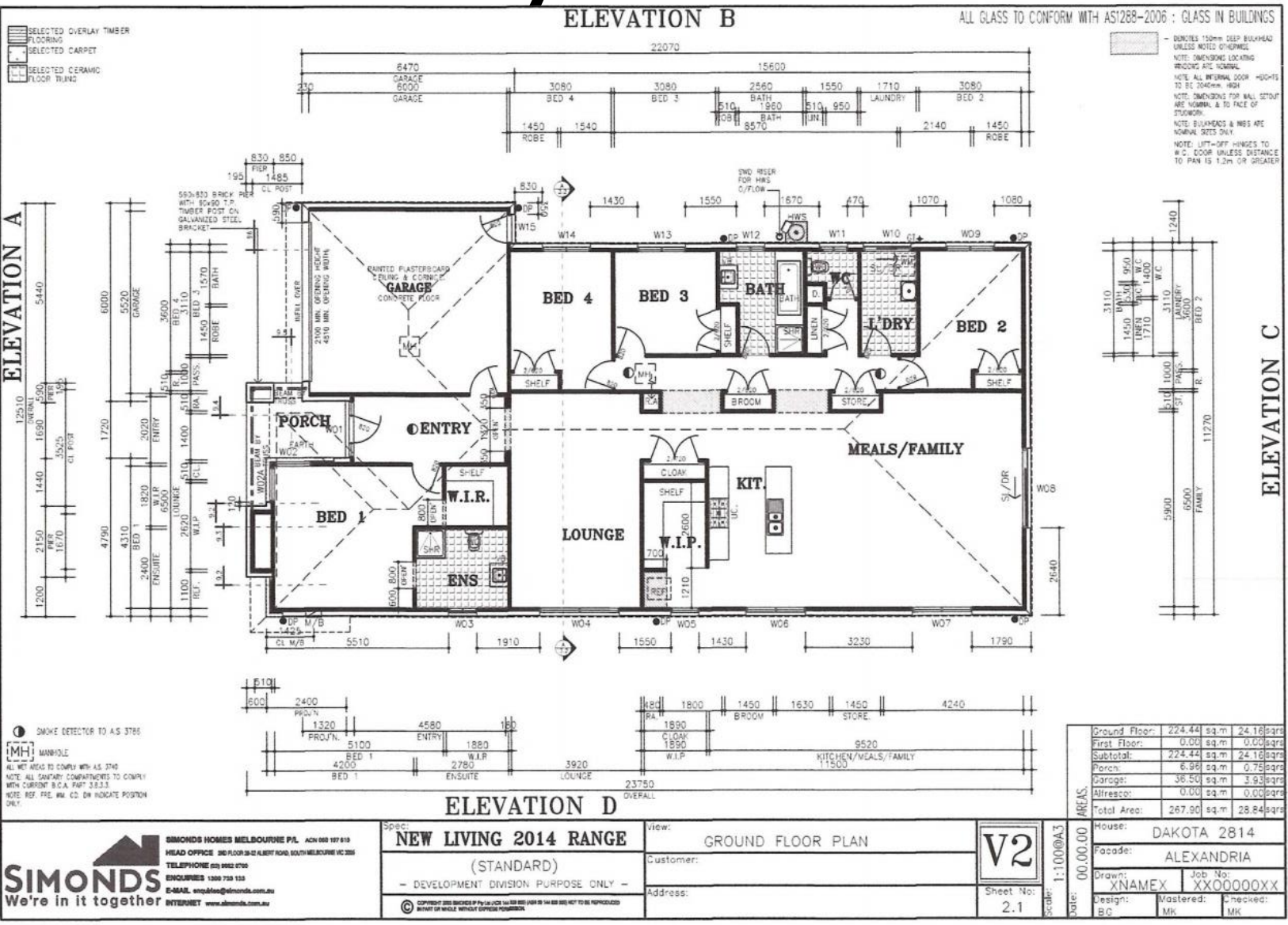
PLATINUM



- Walls – External & Fire Rated = thick line. Internal = thin line, dotted lines = head / bulk head
- Roof – Eaves, roof line, ridge/valley lines
- Windows (W) & Doors (SD)
- Wet areas - Hatching
- Door swing vs cavity slider

Activity: Abbreviations – Find & Name

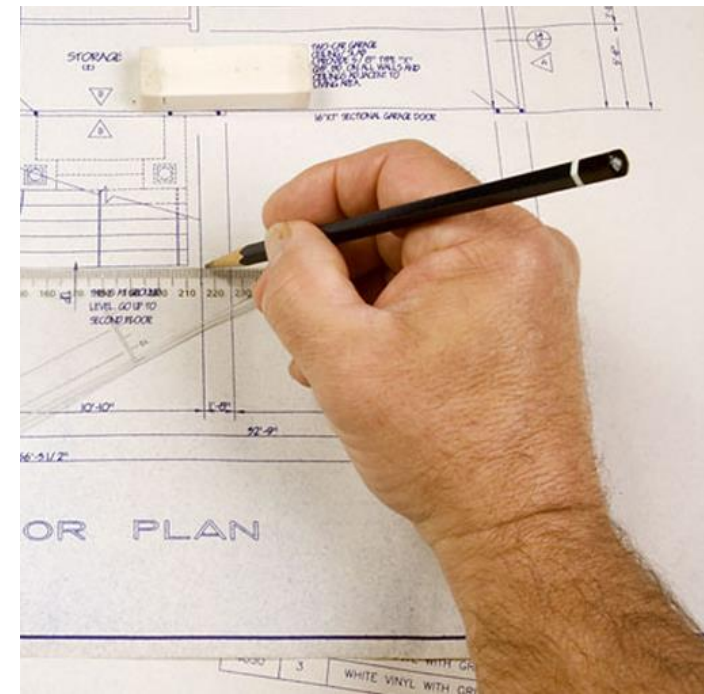
- WC – Water closet (toilet)
- MW – Microwave, UBO – Underbench oven, CT – Cooktop, RH – Range hood, DW – Dishwasher
- WM – Washing machine
- HWS – Hot water system
- DP – Downpipe
- WIR – Walk in Robe
- MH – Man hole
- POS – Private open space
- Others?



Plan Modification

- Benefits of being able to modify existing plans?

- ❖ **Easier to quote** off a plan than an idea
- ❖ Easier for drafts person to **work off an example**
- ❖ Helps you to **visualize end result** (room sizes etc.)
- ❖ Helps you to **communicate with others** – PM, agents, builders



Considerations with Plan Modifications

1) Town Planning Requirements:

- ❖ Zoning, Land size, Frontage, Overlays, Usage - Granny flat, Rooming house, Motel

2) Building Code Requirements:

- ❖ Class of Building – 1a, 1b, 3
- ❖ Building Standards – Habitable Room (Light, Ventilation, Slab thickness etc.)

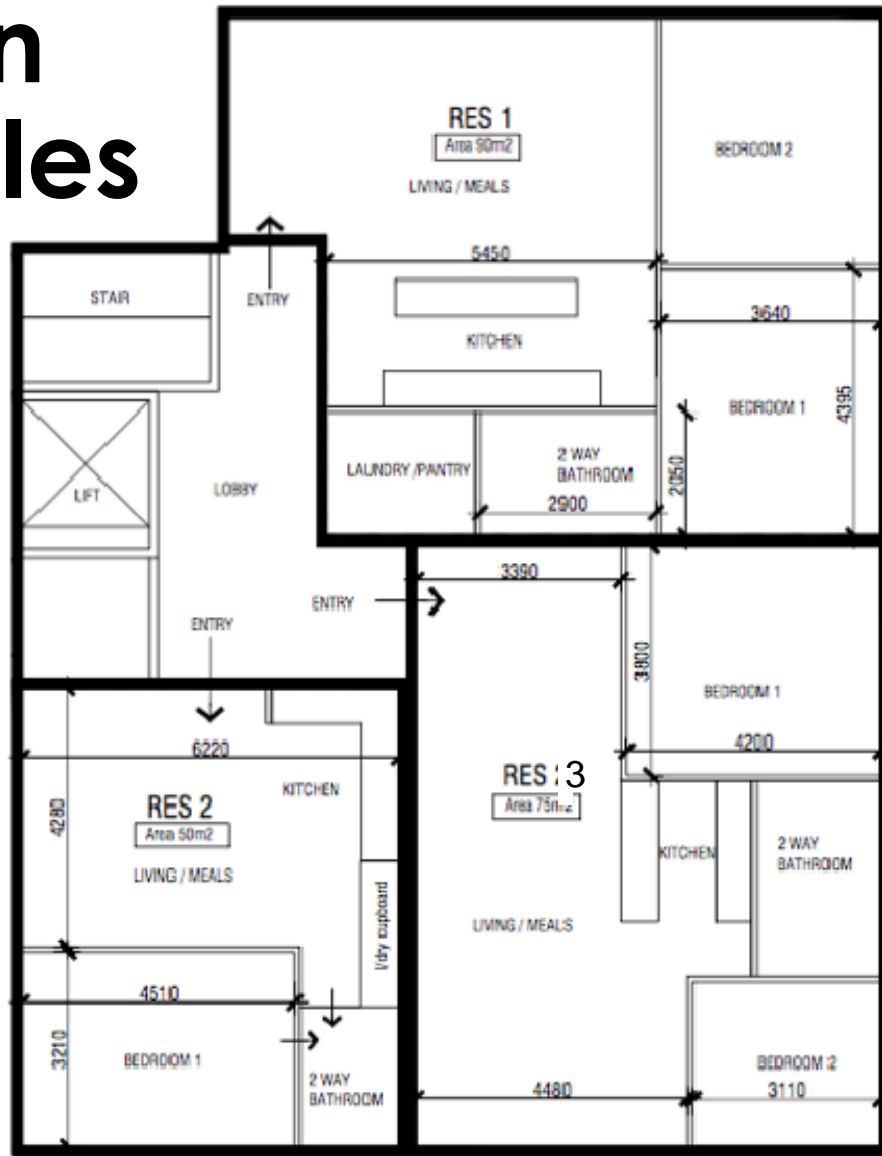
3) Building Constraints:

- ❖ Load bearing walls
- ❖ Slab thickness – Habitable rooms (garage conversion)

4) Market Requirements: Room sizes (3x3 vs 4x4.5), living, parking etc.

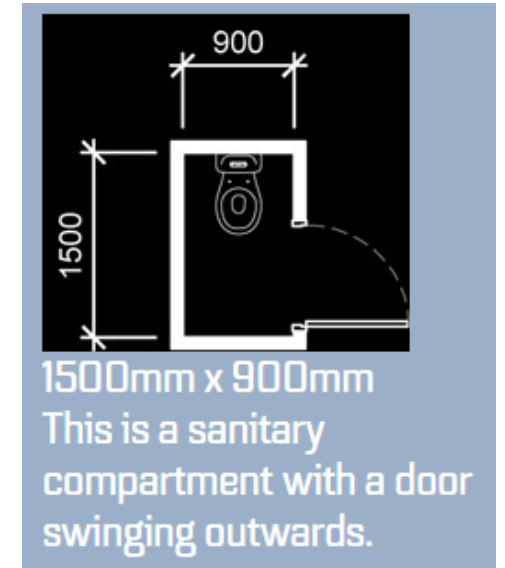
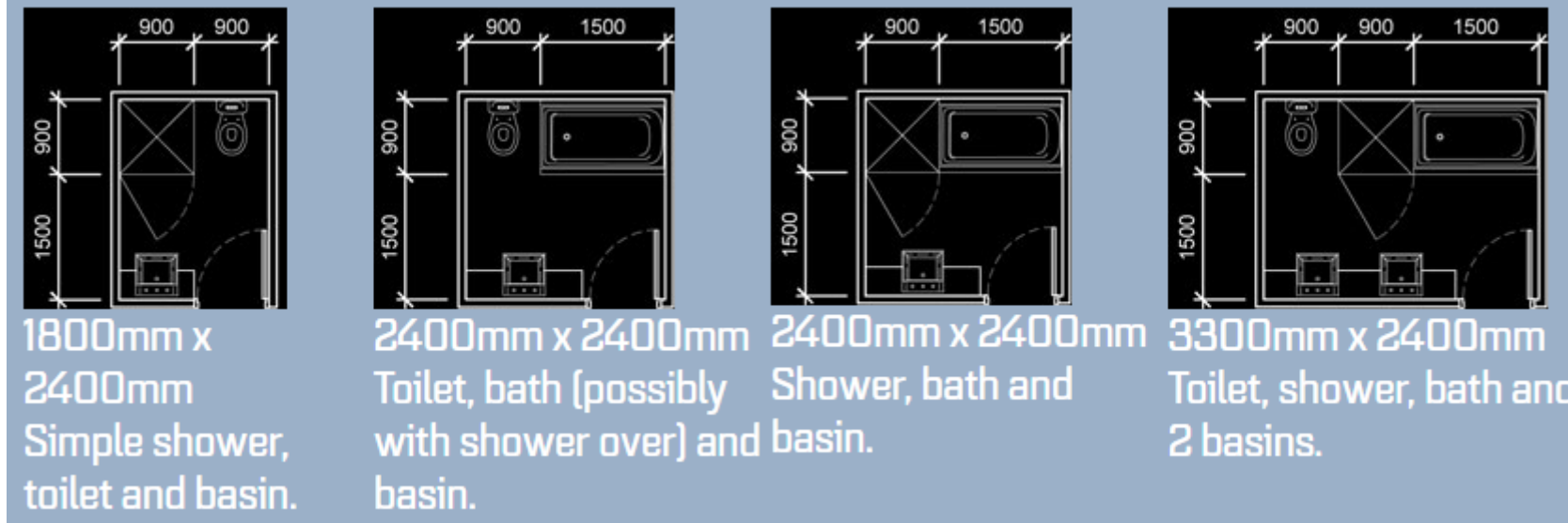
Work In Rectangles

Work in Rectangles - fill in detail later



Standard Dimensions

- Bathroom – Min 2.4m x 2.4m (Shower/bath/vanity)

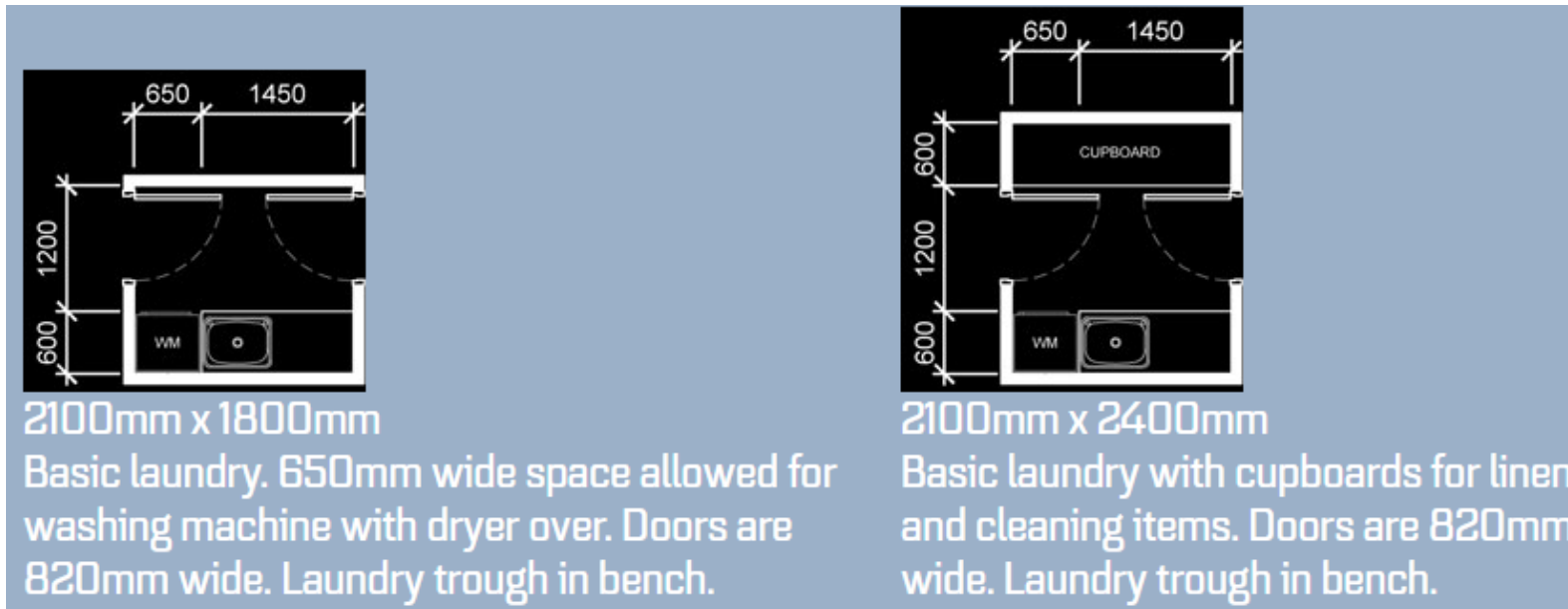


- Pencil Ensuite – 1.2m x 3m (shower/toilet/vanity)
- Toilet – Min 900mm wide x 1.5–1.8m long depending on door type
- Shower – Min 900mm x 900mm

http://www.thirdistudio.com.au/What_Are_Common_House_Room_Sizes.html

Standard Dimensions

- **Laundry** – Standard Min 1.8m x 2.1m; Cupboard 900mm deep

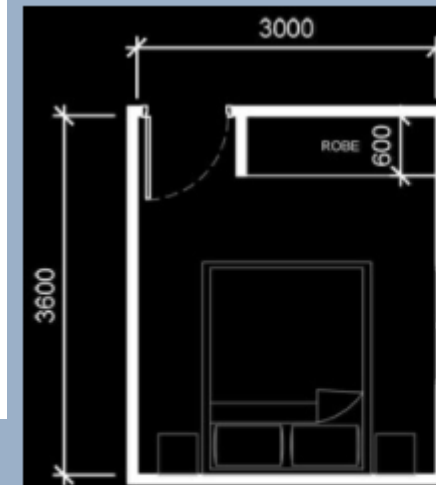


- **Hallway** – Min 900mm wide
- **Swing Door** – 820mm

http://www.thirdistudio.com.au/What_Are_Common_House_Room_Sizes.html

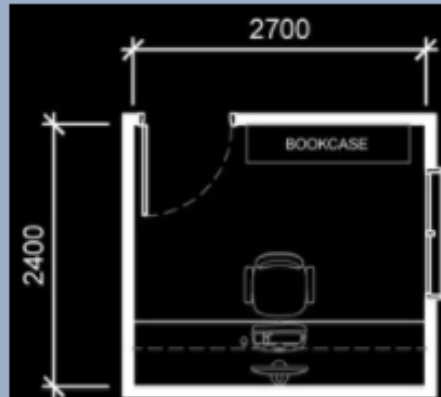
Standard Dimensions

- **Bedroom** – Min 3m x 3m excl. built in robe
- **Robe / Linen / Broom** – 600mm deep
- **Study** – Min 2.4 x 2.7m



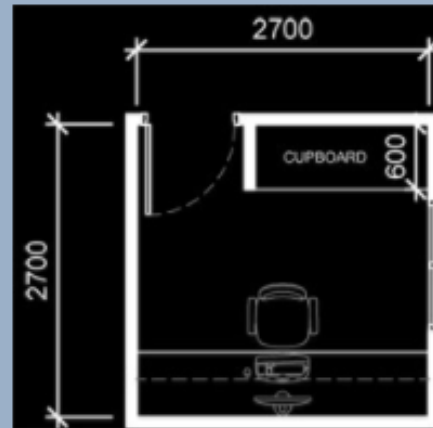
3000mm x 3600mm

Very basic bedroom layout which allows for a built in robe and space for a queens sized bed and 2 side tables. I wouldn't recommend anything smaller than this.



2400mm x 2700mm

Basic small study / home office. Allows for a built in workbench, and enough room for a bookcase.



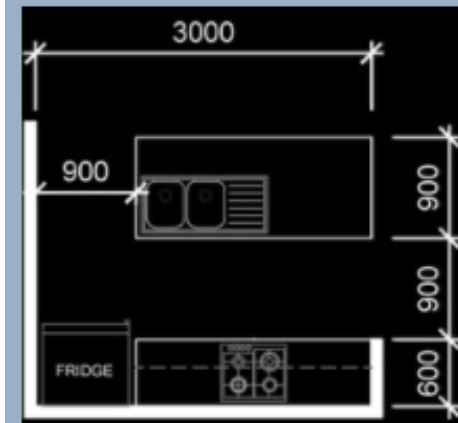
2700mm x 2700mm

Medium sized study / home office. Allows for a built in workbench and built in cupboards.

http://www.thirdistudio.com.au/What_Are_Common_House_Room_Sizes.html

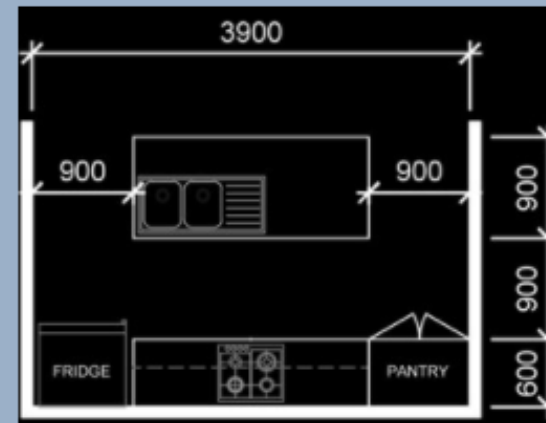
Standard Dimensions

- **Kitchen** – Min 2.4m x 3m; Min 900mm between benches
- **Walk In Pantry** – Min 1.5m wide



2400mm x 3000mm

Very small kitchen with an island bench. Oven under cooktop, overhead cupboards. Note that there is very little cupboard space for both dinnerware, glasses etc and food storage in this layout.



2400mm x 3900mm

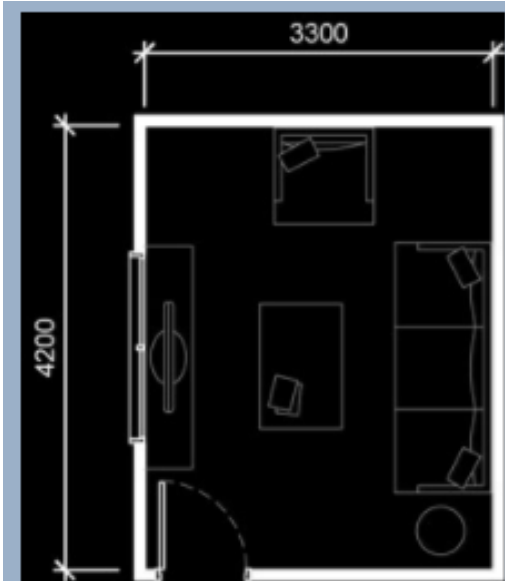
Similar to the previous layout except there is now room for a dedicated pantry. The pantry could also house the microwave.

- **Garaging** - DLUG – 6m x 6m; SLUG 6m x 3m

http://www.thirdistudio.com.au/What_Are_Common_House_Room_Sizes.html

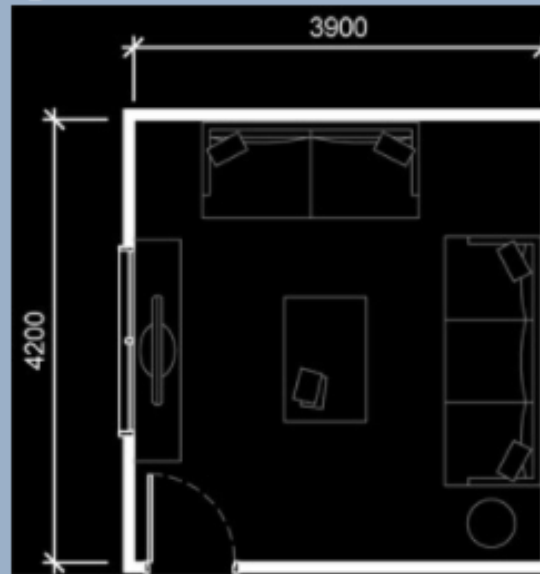
Standard Dimensions

- Lounge – 3.3m x 4.2m depending on furniture



4200mm x 3300mm

Very small living space in my opinion. You could make it work, but I think it would make the space cramped in a space with enclosed walls.



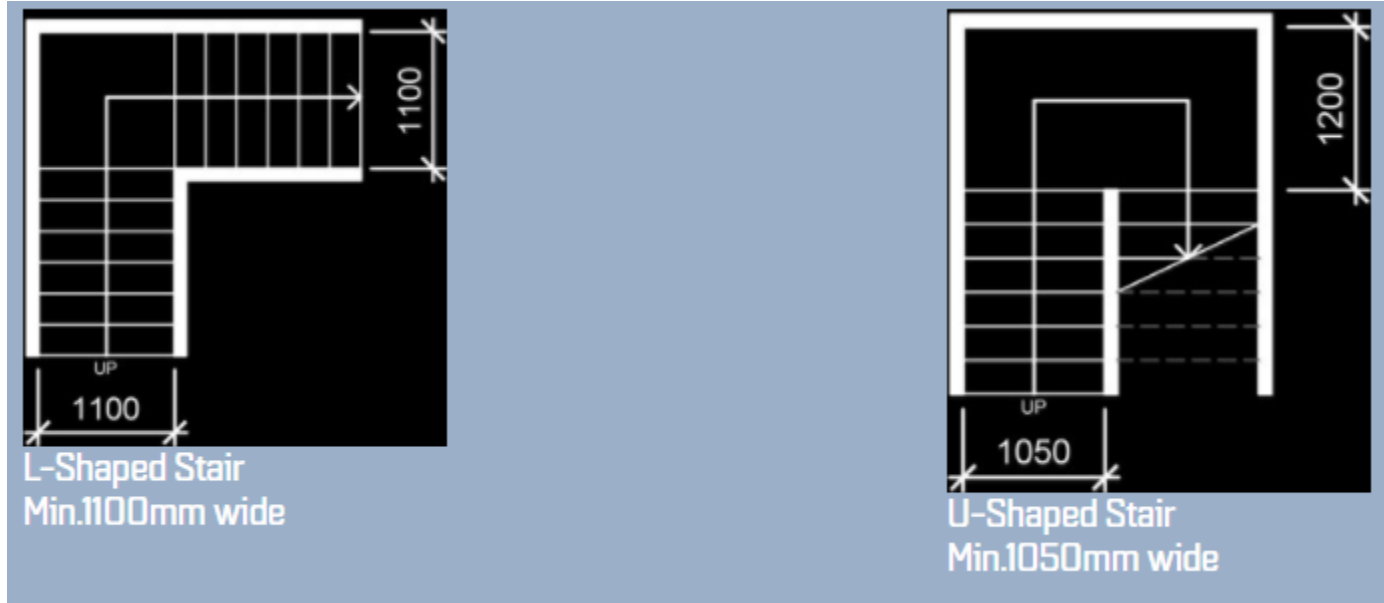
4200mm x 3900mm

Quite a basic space allowing for one 3 seater couch and one 2 seater couch. Slightly more spacious than the previous layout allowing for more leg space between couches and table.

http://www.thirdistudio.com.au/What_Are_Common_House_Room_Sizes.html

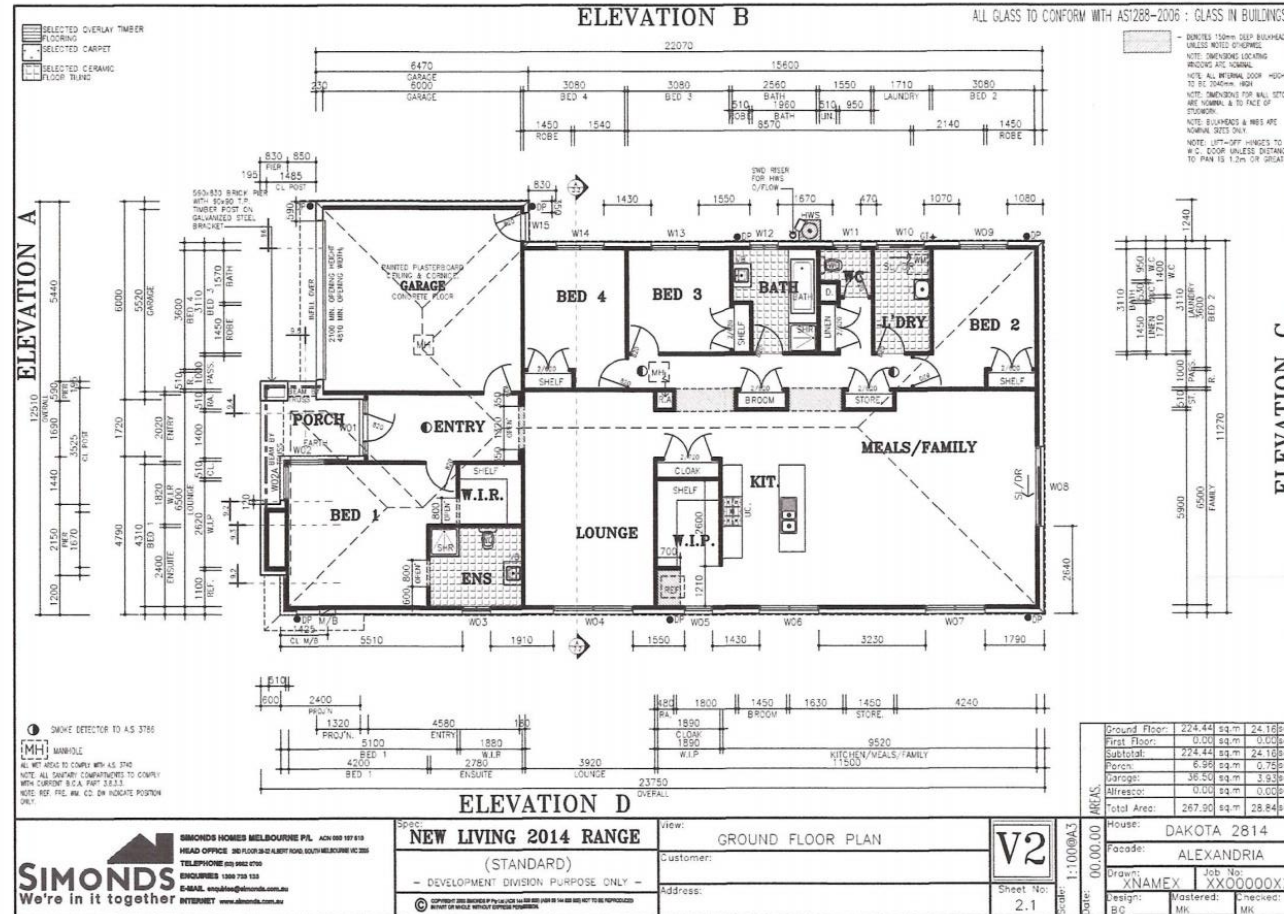
Standard Dimensions

- **Stairs** – Min 1050mm wide; 1200mm recommend (moving furniture)



http://www.thirdistudio.com.au/What_Are_Common_House_Room_Sizes.html

Activity 1 – 4 Bedroom Plan into Rooming Accommodation

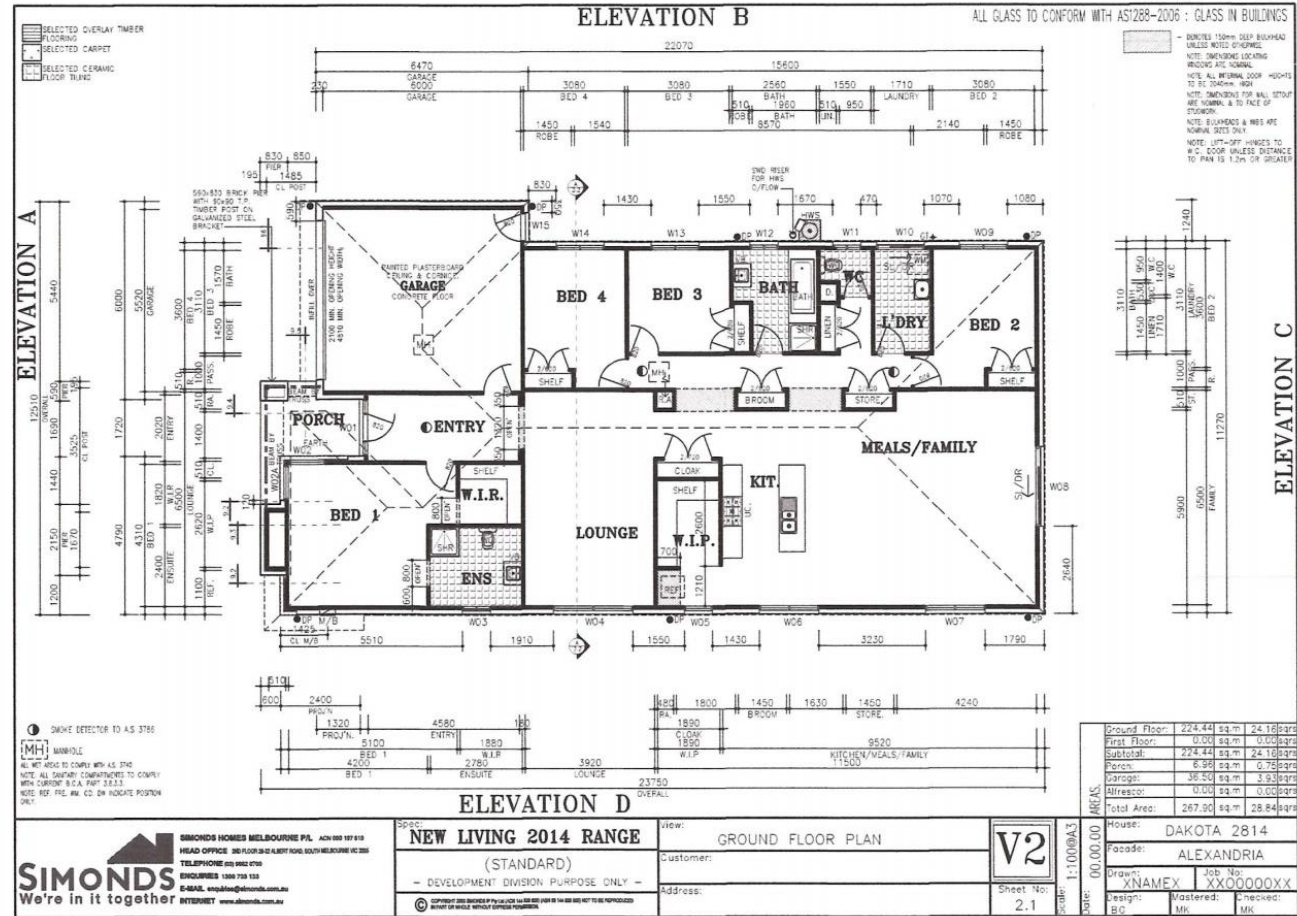


Activity 1 –

Rooming House (Class 1b) – Victorian SPECIFICATIONS

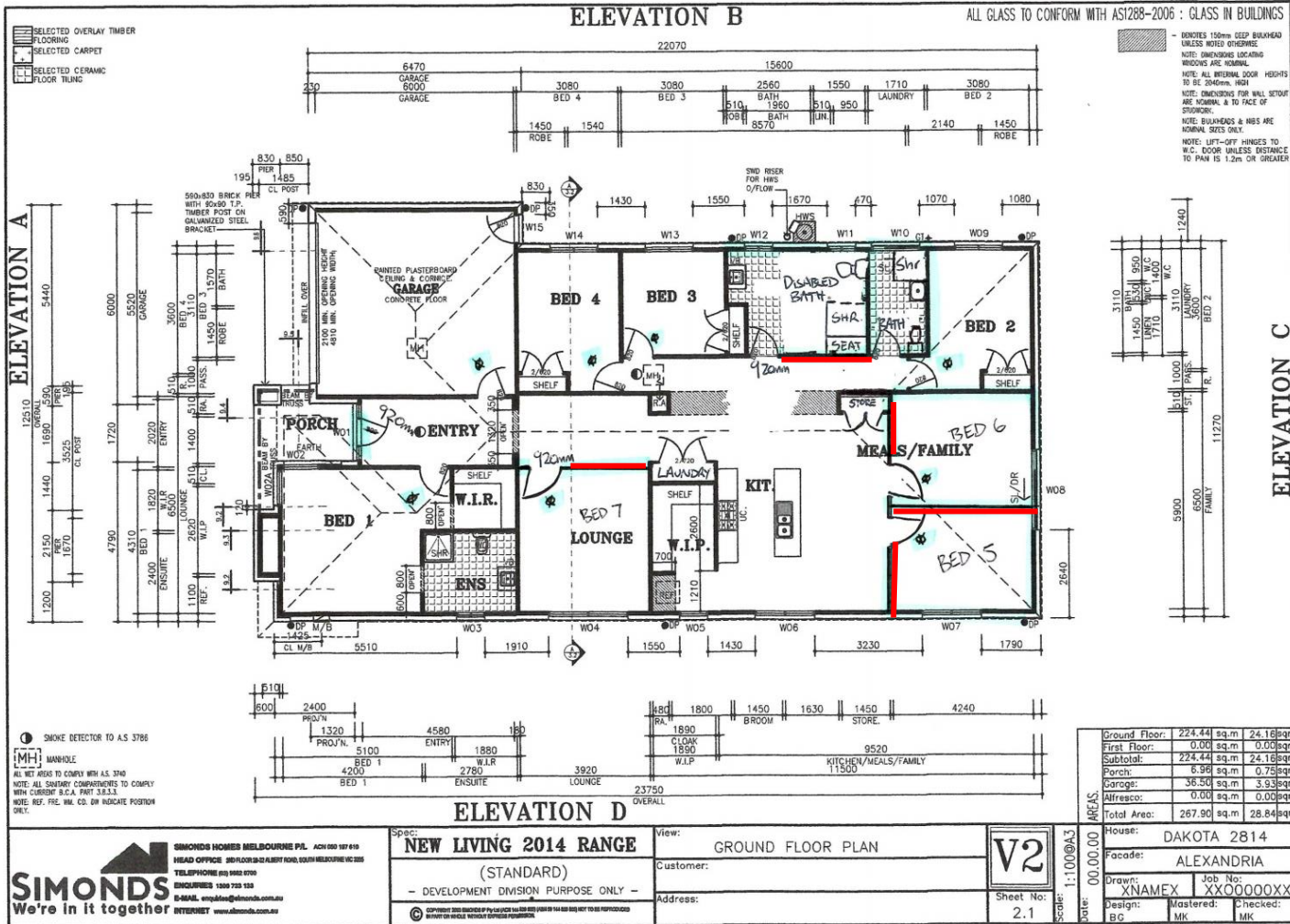
- Max 9 bedrooms / house
- Max 12 residents / house
- Min 1 bath or shower & basin per 10 people!!
- Min 1 disabled bathroom & bedroom / house
- Min bedroom size = 7.5m²
- Min bedroom size for couple = 12m²
- Max building size = 300m²
- Kitchen = Min 400L fridge capacity, Lockable cupboard min 100L storage per resident, Min 4 burner cooktop + oven, sink & food prep area
- Option to include kitchenette in bedroom = Min 80L fridge, cupboard min 100L storage capacity, oven, cooktop, sink, food prep area

Activity 1 – 4 Bedroom Plan into Rooming Accommodation



Assume the house hasn't yet been built!

4 Bedroom Plan into Rooming Accom - Option 1

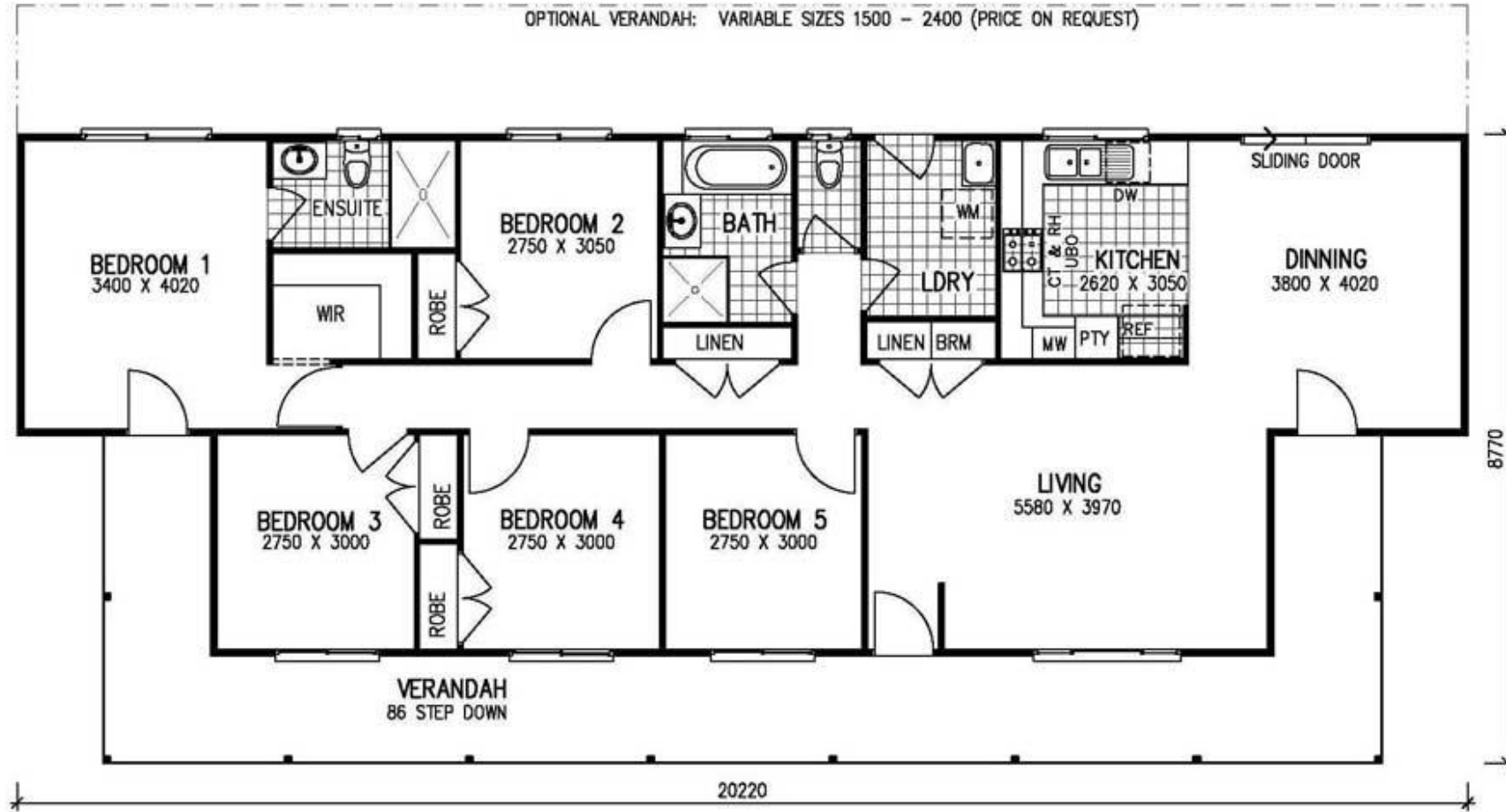


- 1) Converted lounge & meals/family into 3 bedrooms (5, 6, 7)
- 2) Made Bedroom 7 disability accessible with 920mm door
- 3) Converted bathroom & separate toilet into disabled bathroom
- 4) Converted laundry into second bathroom
- 5) Converted cloak/linen cupboard into laundry
- 6) Replaced entry door with 920mm opening for disability access
- 7) Added smoke alarms to all bedrooms

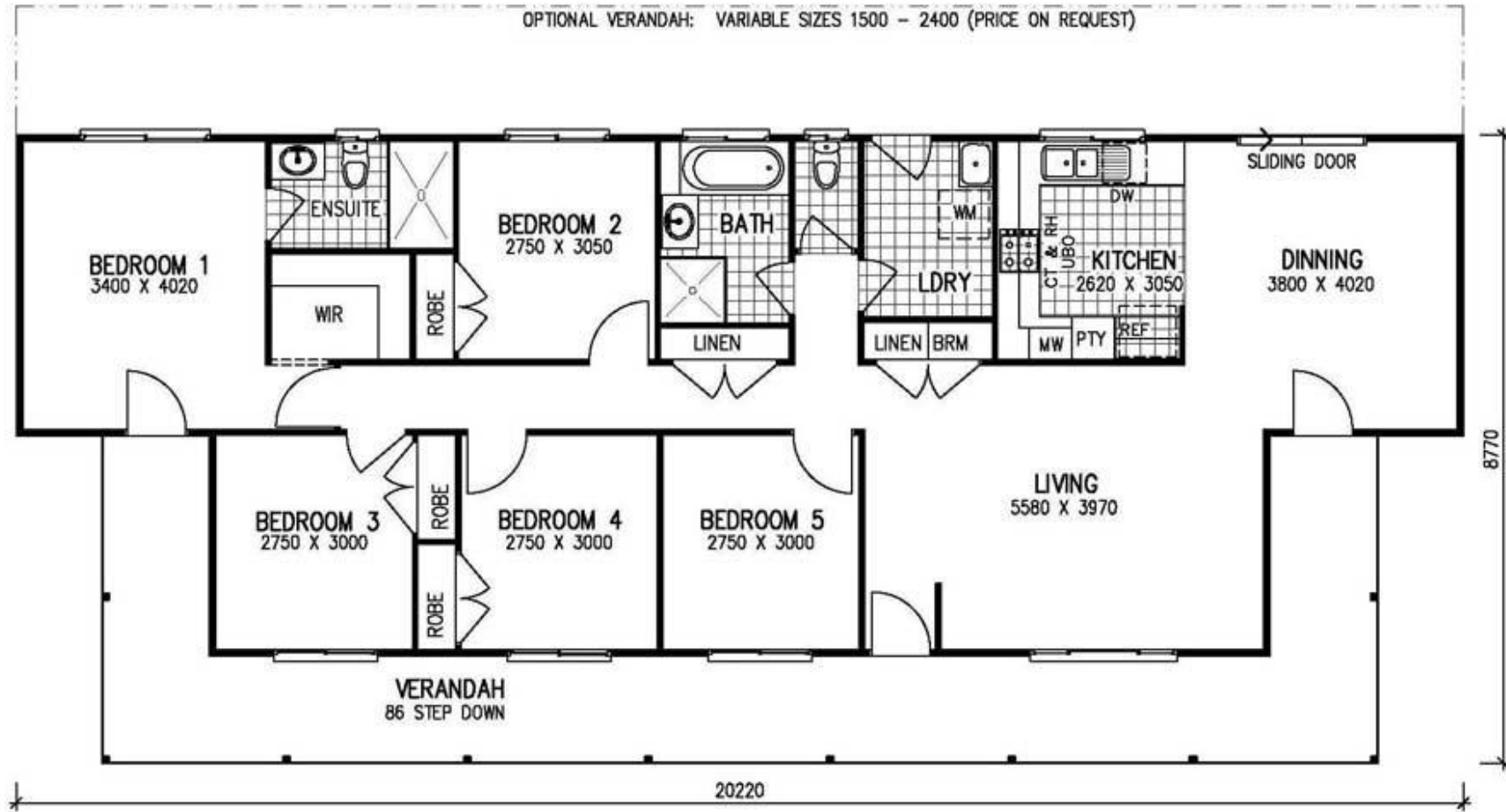


OTHER IDEAS?

Activity 2 – 5 Bedroom into House + Granny Flat



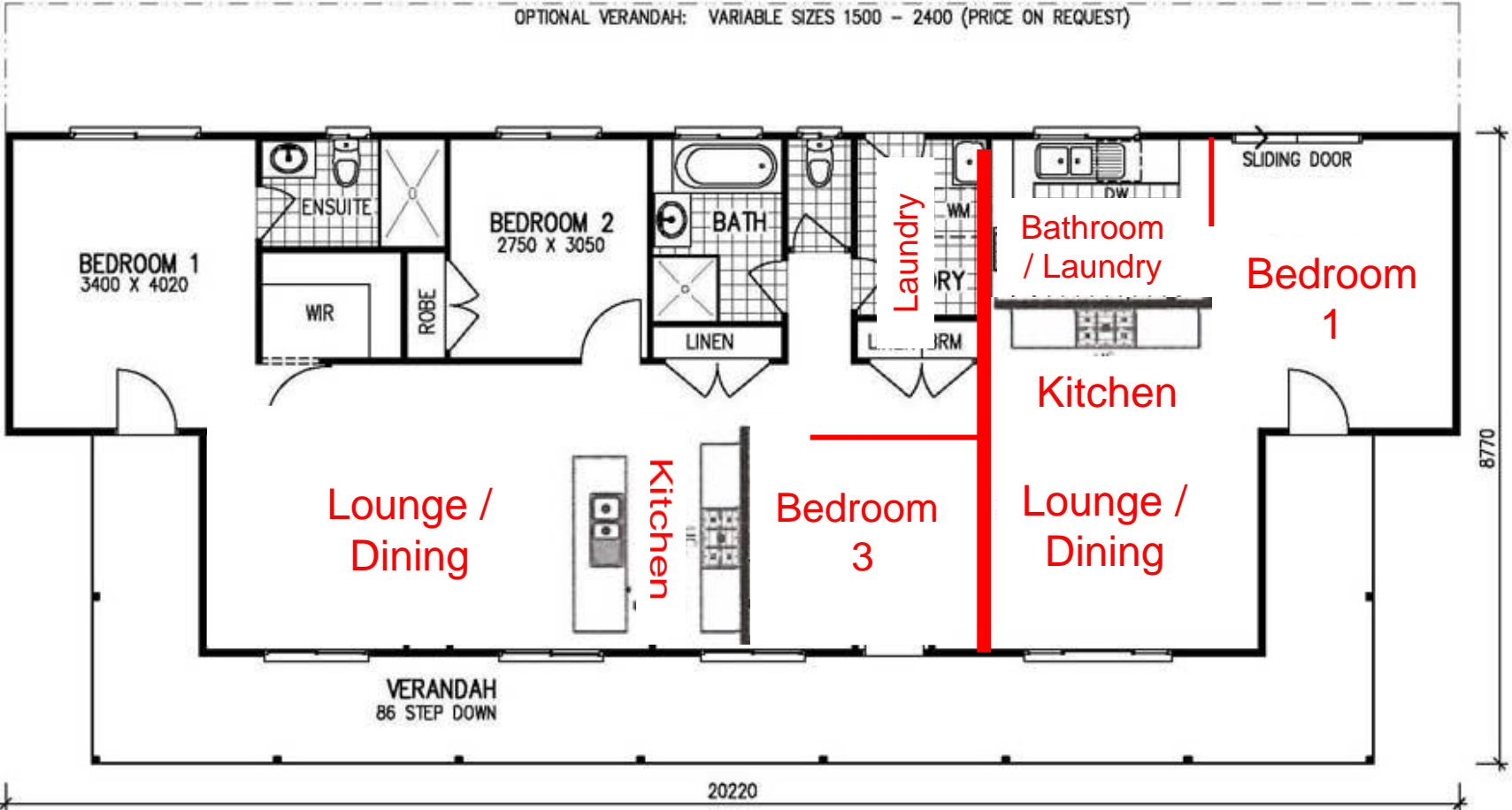
Activity 2 – 5 Bedroom into House + Granny Flat



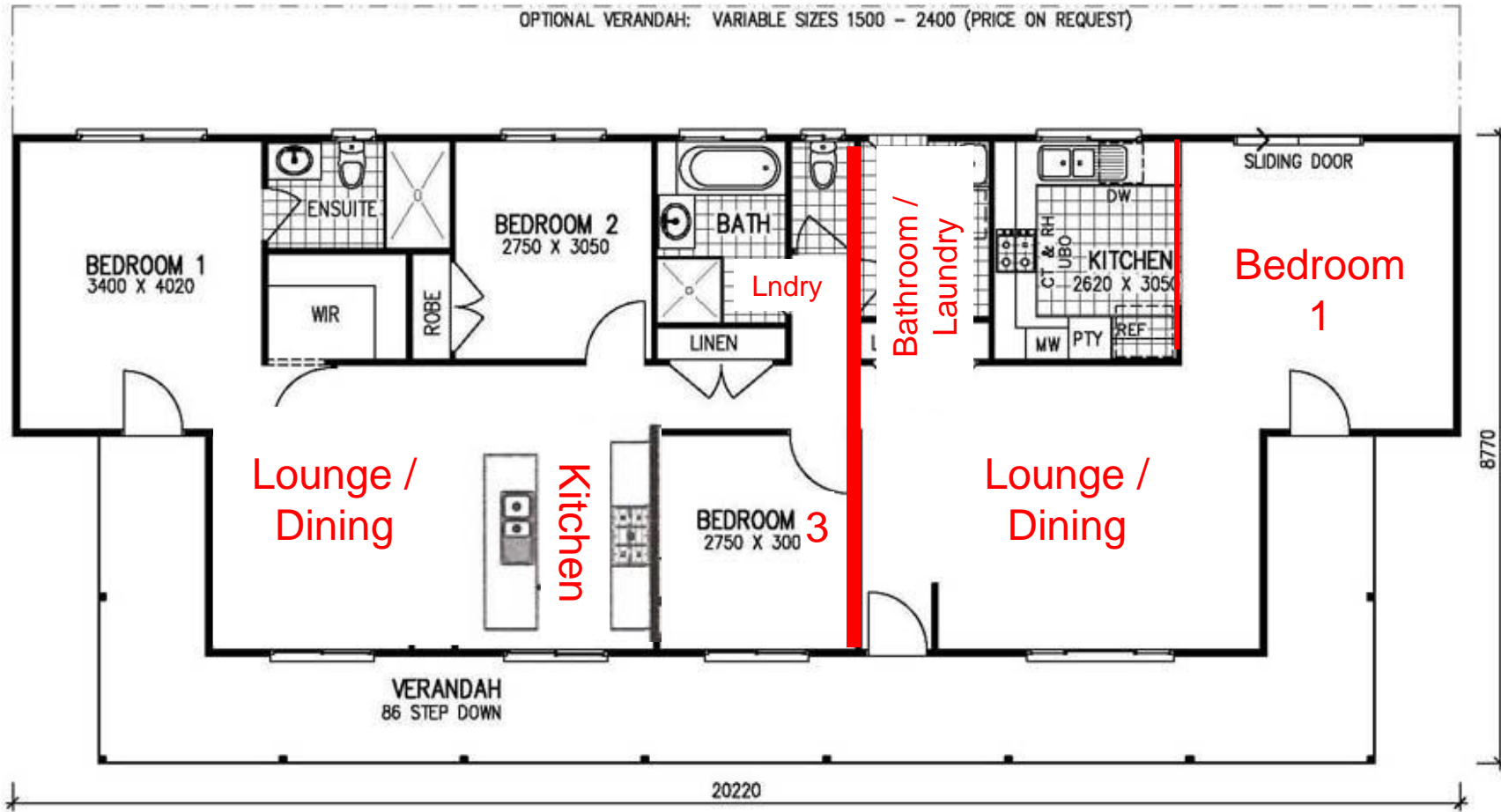
Granny Flat CONSIDERATIONS:

- External Size
- No. Bedrooms
- POS
- Car parking
- Distance from main house
- Fire separation
- Laundry = Fully self contained

5 Bedroom into Granny Flat Option 1



5 Bedroom into Granny Flat Option 2

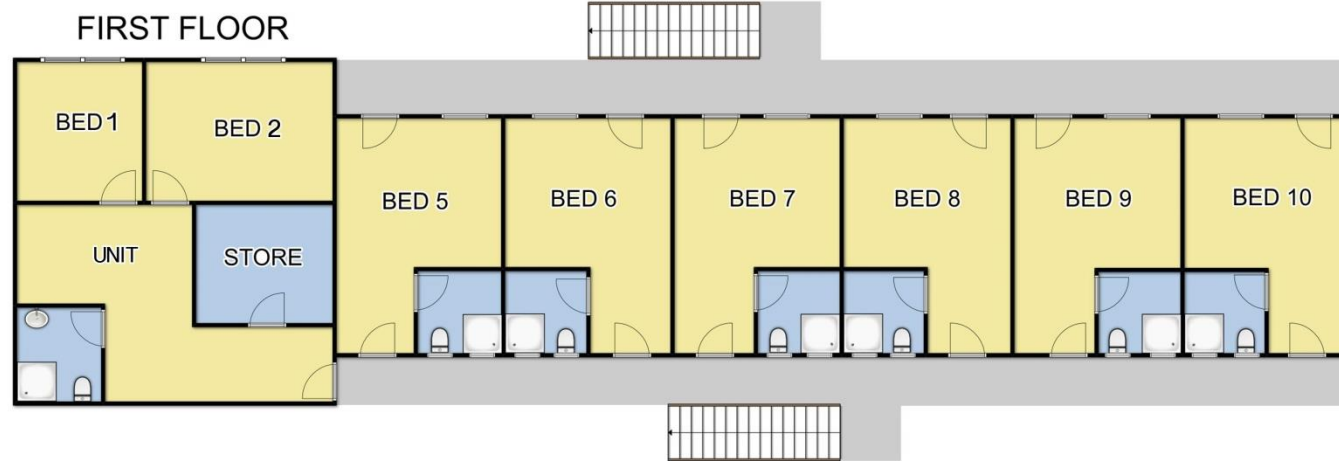




OTHER IDEAS?



Activity 3 – Motel into Higher Yielding Motel



STARTING

- 1) 10 Ensuated bedrooms
- 2) Managers suit downstairs
- 3) 2 Bedroom unit upstairs
- 4) Reception/Office, Kitchen, Dining, Living, Store



Activity 3 – Motel into Higher Yielding Motel



Motel CONSIDERATIONS:

- Room size
- No. bedrooms
- 1brm vs 2brm
- Reception, Office
Kitchen, Storage,
Dining, Lounge,
Manager accom
needs
- Access & parking

Activity 3 – Motel into Higher Yielding Motel



Motel

SPECIFICATIONS:

- Increase number of ensuited bedrooms
- Need reception / office, kitchen, store, managers accom.

Assume the motel is already built!

Activity 3 – Motel into Higher Yielding Motel

Option 1



- 1) 15 Ensueded Bedrooms
- 2) Managers suit downstairs
- 3) Kitchen & storage location retained
- 4) Bathroom added to kitchen

Activity 3 – Motel into Rooming Accommodation

Option 2



- 1) 15 Ensuted Bedrooms
- 2) Compact Manager bedroom downstairs
- 3) Moved kitchen & storage
- 4) # 14 = Double bedroom upstairs



OTHER IDEAS?

QUESTIONS?